

# Proposed Organisation Structure

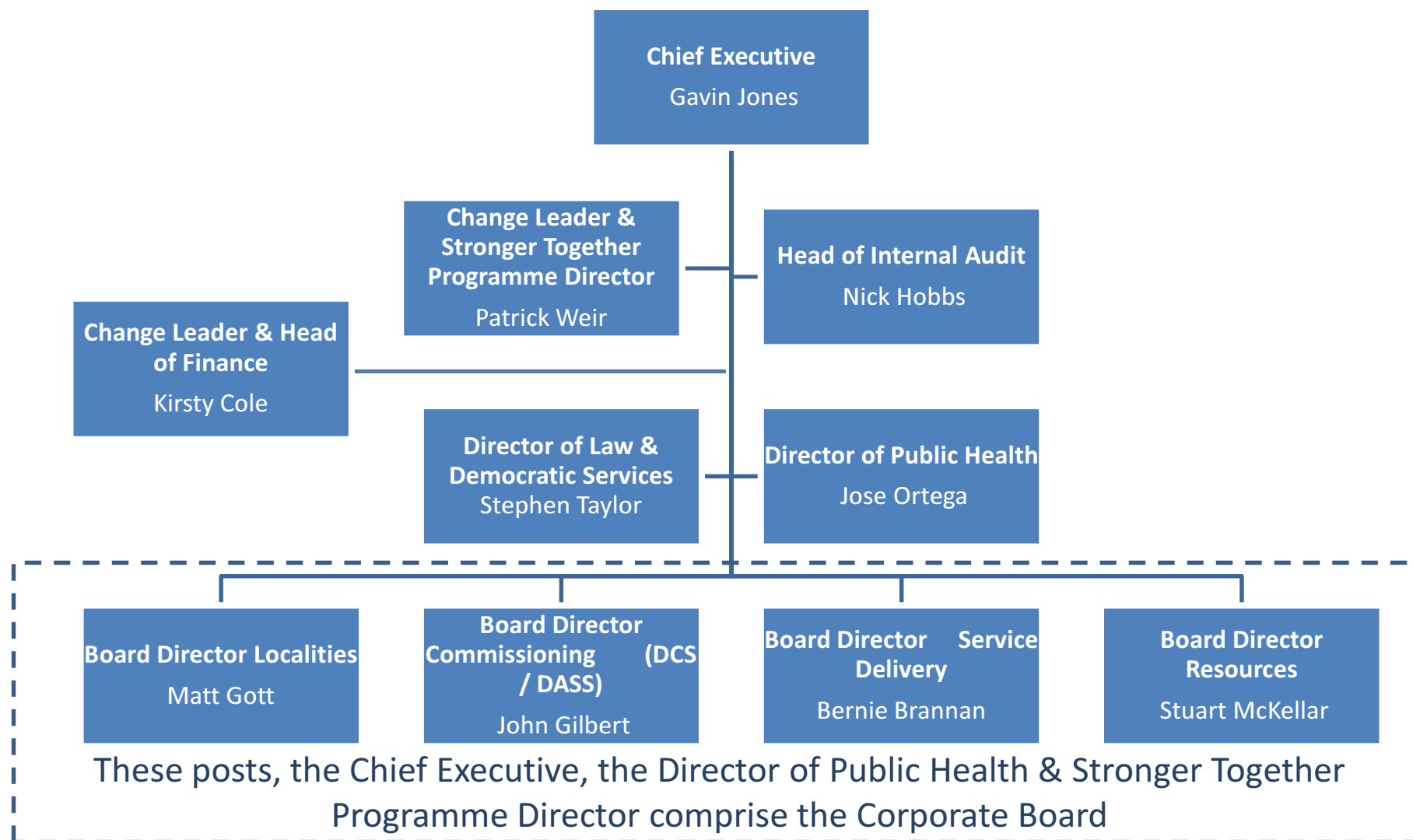
To be implemented by:

1/04/2013

Stronger Together

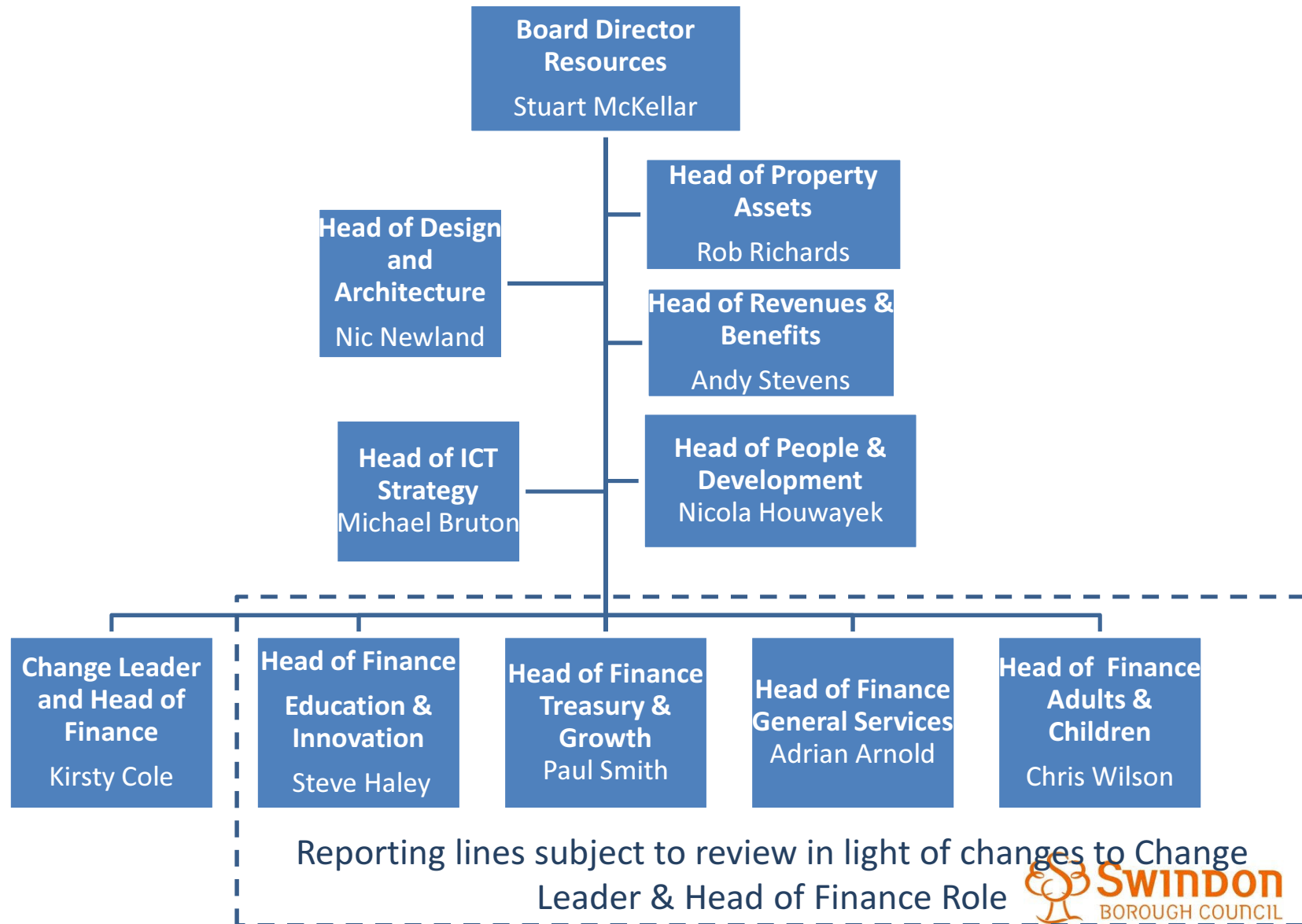


## Tier 1 & Corporate Board



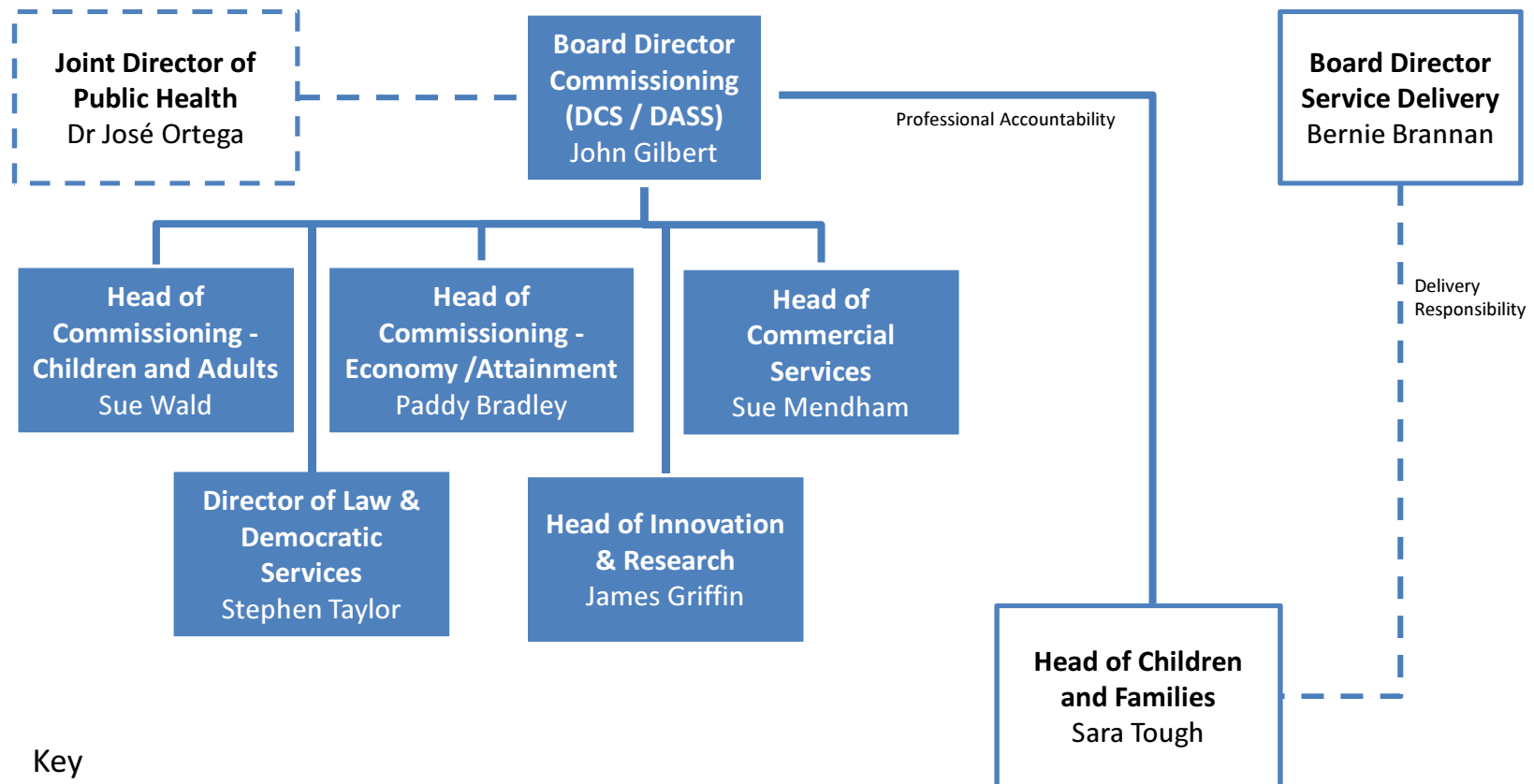
- The Director of Law and Democratic services reports to the Board Director Commissioning (DCS/DASS) and to the Chief Executive in his Monitoring Officer role.
- The Director of Public Health reports to the Chief Executive but has a dotted line link to the Board Director Commissioning.
- The Change Leader and Head of Corporate Finance reports to the Board Director Resources and to the Chief Executive on the Change aspects of their role.







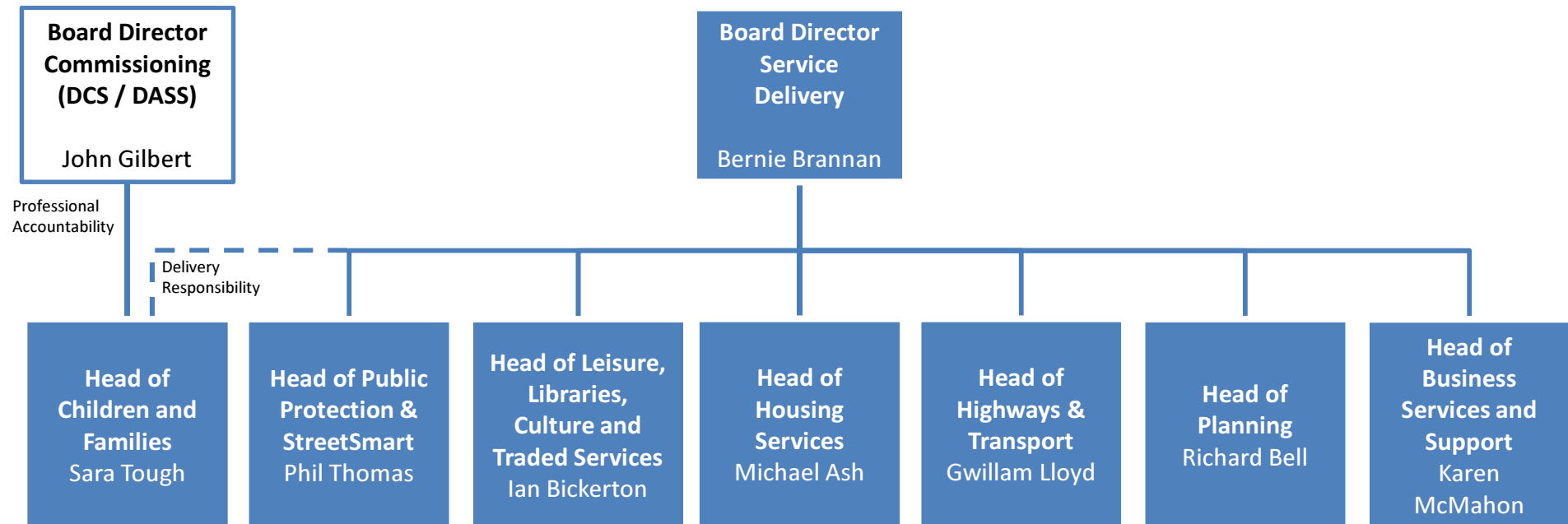
NB: Following the DCS Test of Assurance during the implementation of the Stronger Together model of working, it may be necessary to undertake further re-alignment to ensure that synergies and appropriate linkages are made to ensure capacity and line of sight for the DCS is maintained'.



## Key

- - - Dotted line: Delivery Responsibility
- Solid line: Professional Accountability





Key

- - - Dotted line: Delivery Responsibility
- Solid line: Professional Accountability



## Confirmed Localities Structure

