

Fictional ward

Introduction

The English Indices of Deprivation 2015 (ID 2015) have been produced by the government to aid the assessment of **relative levels of deprivation** across England. These update the indices previously presented in 2000, 2004, 2007 and 2010.

The Indices provide scores and ranks for all 32,844 Lower Level Super Output Areas (LSOAs) in England for a combined Index of Multiple Deprivation (IMD), seven domains of deprivation and two supplementary indices for income deprived children and older people. Each of these is based on a basket of indicators. The LSOAs are ranked with **1 being the most deprived** and 32,844 being the least. In Swindon, the rankings go from **1 being the most deprived** to 132 being the least deprived. For many analyses the LSOAs are categorised into deciles (10ths) or quintiles (5ths).

LSOAs contain around 1,500 people and are standard geographical units created and used by the Government and Office for National Statistics (ONS). The LSOA boundaries do not form the basis of wards and often do not follow ward boundaries. For the purposes of analysing the ID 2015, each LSOA has been assigned to the ward containing the majority of the LSOA population (which is not always the same ward that contains the majority of the LSOA's geographical area). Additionally, as Swindon has grown rapidly this has led to several new LSOAs being created which means that it is not always possible to compare ID 2015 data with previous indices of deprivation. Ward boundaries in Swindon were changed in 2011 and therefore no direct comparisons can be made with previous wards used in earlier Indices.

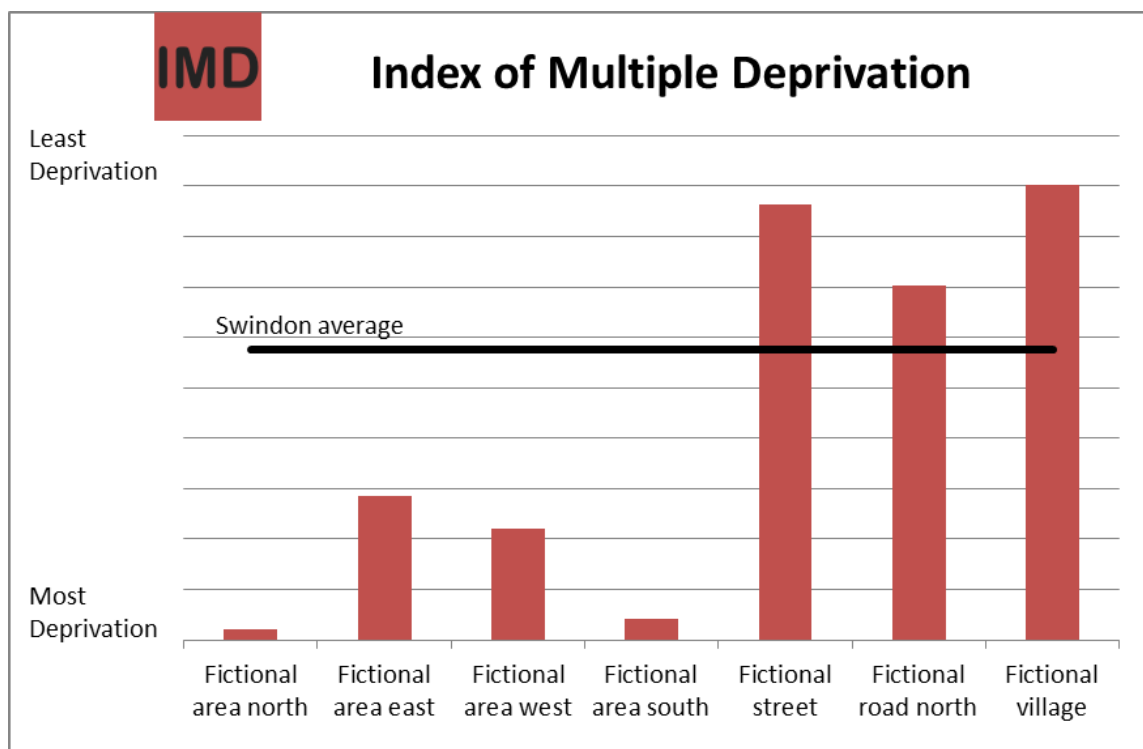
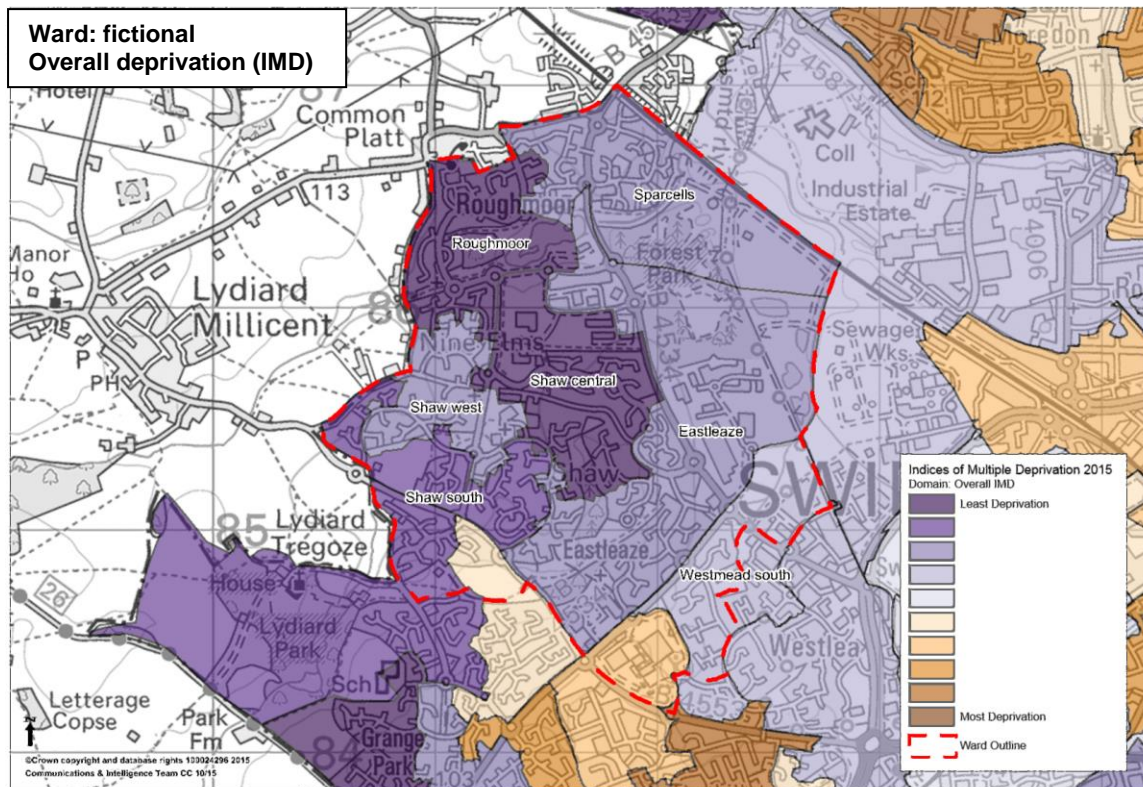
The neighbourhood-level Indices provide a description of areas, but this description does not apply to every person living in those areas. Many non-deprived people live in deprived areas, and many deprived people live in non-deprived areas. Those areas that are not identified as deprived by the neighbourhood-level Indices may contain both deprived and affluent people.

Changes in deprivation levels over time are relative to other areas. An area may become less deprived in absolute terms but be relatively more deprived than it was because the area had improved more slowly than other areas and so been 'overtaken' by those areas. Similarly, the overall rank of an area may not have changed between the 2010 and 2015 Indices, but this does not mean that there have been no changes to the level of deprivation in the area. E.g. in the situation where the absolute levels of deprivation in all areas were increasing or decreasing at the same rate, an individual area's rank would not change.

The Indices measure area deprivation but people can move areas between versions of the Indices. Therefore, the socio-economic status of individuals in an area may improve or worsen but if these people leave then the area deprivation may remain unchanged. Likewise individuals moving into a community can improve or worsen the area deprivation.

Further information on the Indices of Deprivation 2015 can be found on the dedicated JSNA website page: <http://swindonjsna.co.uk/dna/ID>

Overview



Fictional area north is the most deprived LSOA in Fictional ward and is ranked 732nd most deprived in England (out of 32,844).

IMD 2015 ranking for Fictional LSOAs

LSOA local name	LSOA code	Fictional ward rank	Swindon rank	England rank	England decile
Fictional area north	aaaaaaa	1	2	732	1
Fictional area south	ddddddd	2	6	1,395	1
Fictional area west	ccccccc	3	32	7,286	3
Fictional area east	bbbbbbb	4	36	9,414	3
Fictional road north	ffffff	5	101	23,089	8
Fictional street	eeeeeee	6	125	28,381	9
Fictional village	ggggggg	7	131	29,600	10

Notes: Swindon rankings out of 132 LSOAs and England rankings out of 32,844 LSOAs.

Deprivation trends

Geog type	Ward	Local LSOA Name	IMD version		
			2007	2010	2015
Local Authority	Null	Swindon average	19,718	20,213	18,933
Ward	Fictional	Fictional area north	678	703	732
		Fictional area east	8,799	8,432	9,414
		Fictional area west	1,175	1,228	1,395
		Fictional area south	9,021	7,878	7,286
		Fictional street	27,829	26,734	28,381
		Fictional road north	25,211	24,170	23,089
		Fictional village	29,303	29,884	29,600

Five of the seven LSOAs in Fictional ward have become relatively less deprived in 2015 than they were in 2007, although generally not by very much.

Fictional area south and Fictional road north have become relatively more deprived between 2007 and 2015 but again not by much. Fictional area north was the most deprived LSOA in Fictional ward in 2007, 2010 and 2015.

Domain analysis**Most deprived LSOA in Fictional ward in each Domain**

Domain	Most deprived LSOA in Fictional ward	Swindon rank	England rank	England decile
Income	Fictional area south	4	1,262	1
Employment	Fictional area south	2	315	1
Education, Skills and Training	Fictional area north	7	2,512	1
Health	Fictional area south	1	36	1
Crime	Fictional area north	6	3,140	1
Barriers to Housing and Services	Fictional area north	3	3,719	2
Living Environment	Fictional area north	2	412	1

Notes: Swindon rankings out of 132 LSOAs and England rankings out of 32,844 LSOAs.

Ranking of LSOAs in Fictional ward on each ID 2015 Domain: graphic

England Rank		Local Authority		Ward					
0				32,844					
Domain Type	Domain	Swindon average	Fictional area north	Fictional area east	Fictional area west	Fictional area south	Fictional street	Fictional road north	Fictional village
Domain	IMD	18,934	732	9,414	7,286	1,395	28,381	23,089	29,600
	Income	18,098	1,408	8,767	8,543	1,262	28,512	24,384	28,902
	Employment	19,020	2,406	6,953	5,338	315	27,723	22,605	30,976
	Education, Skills and Training	14,108	2,512	4,572	3,997	6,865	25,176	12,388	29,214
	Health	18,207	887	7,986	3,787	36	28,809	18,923	29,758
	Crime	15,598	3,140	11,535	26,433	16,418	29,269	14,369	29,622
	Barriers to Housing and Services	20,569	3,719	28,260	19,393	25,763	8,528	25,327	6,022
	Living Environment	21,482	412	26,314	12,642	24,879	22,124	24,938	28,550
Sub-Domain	IDACI	16,866	1,608	9,222	8,499	1,595	28,733	22,592	28,358
	IDAQPI	18,822	1,855	8,938	8,742	1,042	26,464	24,352	27,590

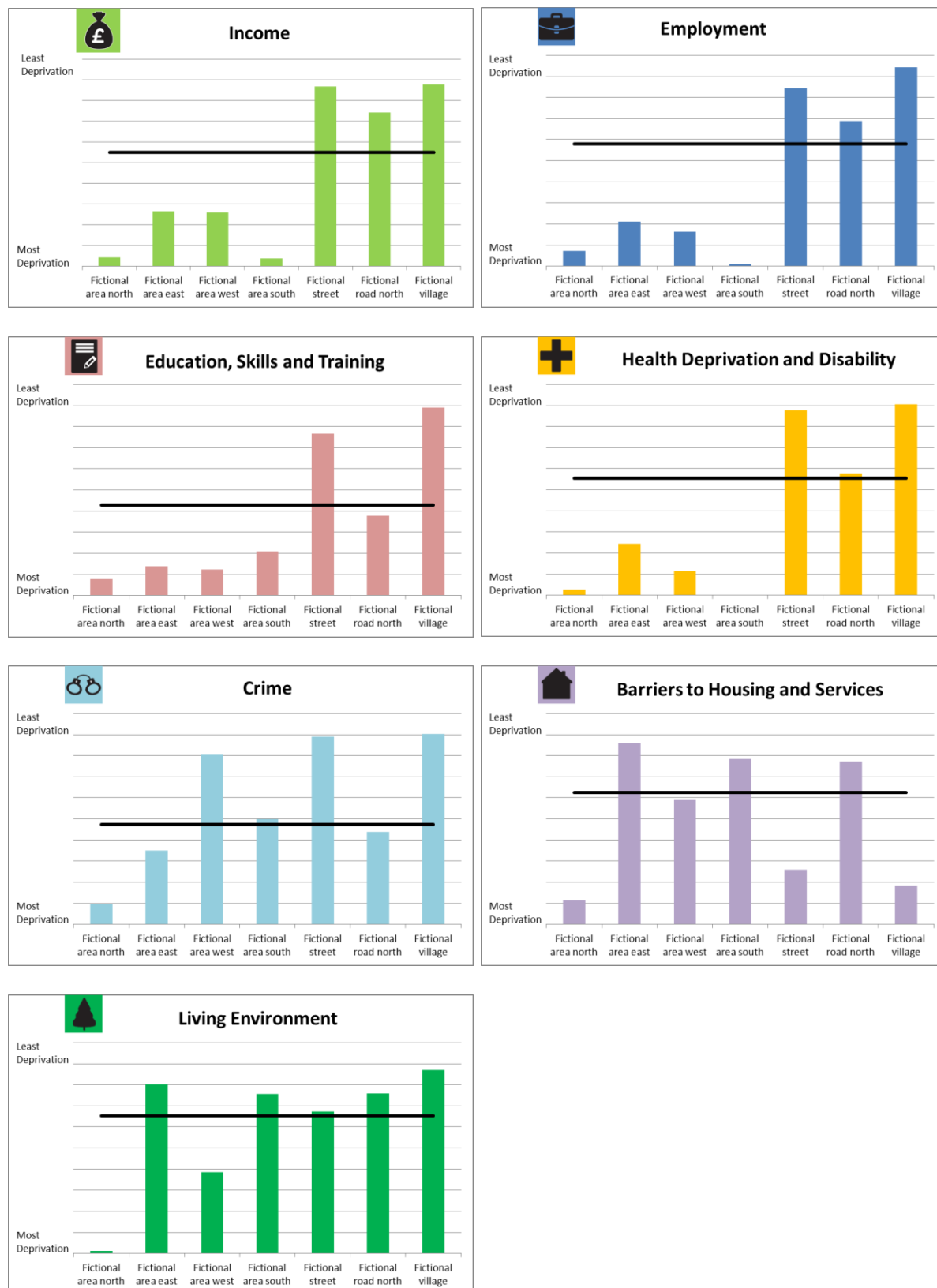
Fictional area north is the most deprived LSOA in Fictional ward on the Education, Skills and Training, Crime, Barriers to Housing and Services and Living Environment domains. It is considered 'highly deprived' on every domain apart from Barriers to Housing and Services.

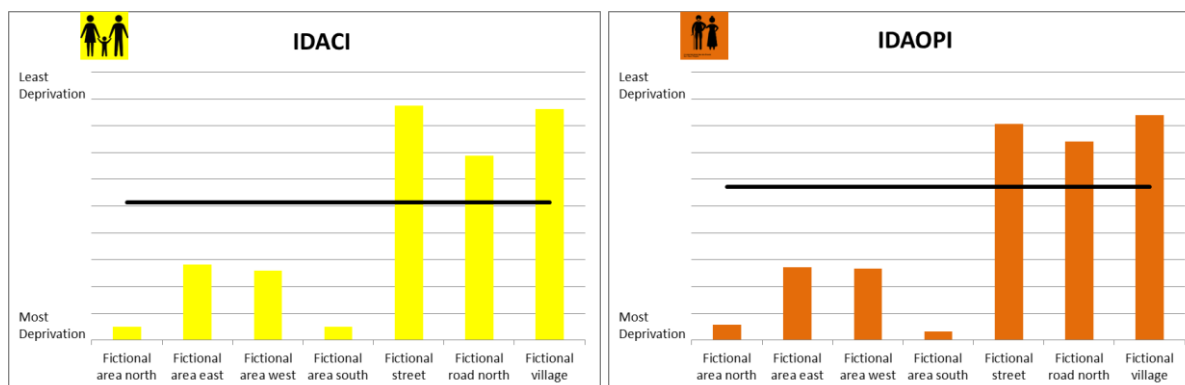
Fictional area south is the most deprived LSOA in Fictional ward on the Income, Employment and Health domains. It is considered 'highly deprived' on each of these domains.

None of the other five LSOAs in Fictional ward are considered 'highly deprived' on any domain.

Ranking of LSOAs in Fictional ward on each ID 2015 Domain: charts

(The Swindon average is represented by the thick black line)





Fictional area north LSOA

Fictional area north is the most deprived LSOA in Fictional ward on the overall IMD and second most deprived in Swindon. It is also the most deprived in the ward on the Education, Skills and Training, Crime, Barriers to Housing Services and Living Environment domains and second most deprived LSOA in Swindon on the latter two of these.

The Living Environment domain is made up of 4 indicators:

- Houses without central heating (proportion)
- Housing in poor condition: The proportion of social and private homes that fail to meet the Decent Homes standard.
- Air quality: A measure of air quality based on emissions rates for four pollutants
- Road traffic accidents involving injury to pedestrians and cyclists.

Fictional area north LSOA's relative deprivation on the domain is driven by the proportion of houses in poor condition. In this domain Fictional area north LSOA and other LSOAs in Fictional ward ranked well on air quality compared to the other three measures.

The Crime domain is made up of the following indicators:

- Violence: The rate of violence per 1,000 at-risk population (0.324)
- Burglary: The rate of burglary per 1,000 at-risk properties (0.189)
- Theft: The rate of theft per 1,000 at-risk population (0.222)
- Criminal Damage: The rate of criminal damage per 1,000 at-risk population. (0.265)

These were combined into a single index using the weights in brackets above. The data was recorded crime data for 2013/14 from the Association of Chief Police Officers and the Home Office.

In 2007, Fictional area north west was ranked 8,895th in England on the Crime domain, in 2010 it was ranked 9,606th but in 2015 it was ranked 3,140th. On the IMD overall it moved from 678th to 732nd therefore the change in the Crime domain ranking was more dramatic and in the opposite direction to the overall IMD.

Income domain analysis

Four of the seven LSOAs in the Fictional ward are in the three most deprived deciles in England on the Income domain. Two are ranked in the seven most deprived in Swindon and four in the 14 most deprived.

The Income Deprivation Domain measures the proportion of the population in an area experiencing deprivation relating to low income. The definition of low income used includes both those people that are out-of-work, and those that are in work but who have low earnings (and who satisfy the respective means tests). Additionally, there are two supplementary indices which are subsets of the Income Deprivation Domain. These are the Income Deprivation Affecting Children Index (IDACI) and the Income Deprivation Affecting Older People Index (IDAOPI). Fictional area ward LSOAs ranking on these three measures is described in the table below.

Swindon ranking and England decile of selected Fictional area LSOAs on Income domain and supplementary indices

LSOA local name	Income domain				
	Number of people income deprived	% of people income deprived	Swindon ranking	England decile	England ranking
Fictional area north	545	30.6%	7	1	1,408
Fictional area east	500	27.2%	14	3	8,767
Fictional area west	625	27.4%	13	3	8,543
Fictional area south	390	30.9%	4	1	1,262
Swindon	26,315	12.5%			

LSOA local name	IDACI				
	Number of children income deprived	% of people income deprived	Swindon ranking	England decile	England ranking
Fictional area north	140	38.4%	6	1	1,608
Fictional area east	165	34.2%	16	3	9,222
Fictional area west	190	35.3%	12	3	8,499
Fictional area south	120	38.5%	5	1	1,595
Swindon	7,120 (min)	17.2%			

LSOA local name	IDAOPI				
	Number of older people income deprived	% of people income deprived	Swindon ranking	England decile	England ranking
Fictional area north	130	39.0%	5	1	1,855
Fictional area east	90	27.7%	17	3	8,938
Fictional area west	150	28.2%	15	3	8,742
Fictional area south	75	48.2%	2	1	1,042
Swindon	6,100 (min)	15.3%			

Notes: Swindon rankings out of 132 LSOAs and England rankings out of 32,844 LSOAs.

The table above show that income deprivation mainly affects different age groups in different LSOAs. For example in Fictional area south LSOA 48.2% of older people are considered income deprived compared to 38.5% of children. However, in Fictional area west 28.2% of older people are considered income deprived but 35.3% of children.