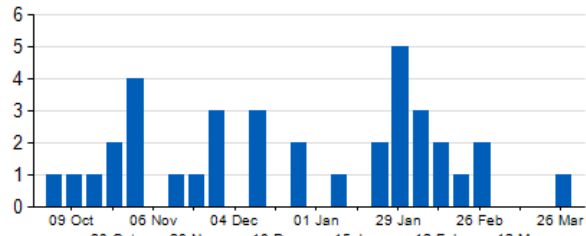


Place Of Safety activity Swindon CCG October 2016 – March 2017

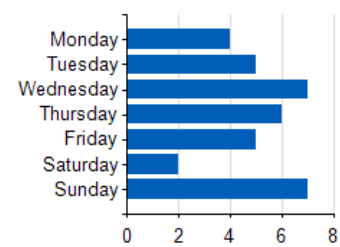
Page:

- Admissions
- Detentions
- Discharges
- Demographics

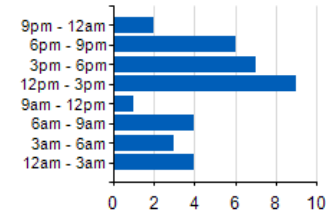
MR2a - Number of detainees, by week



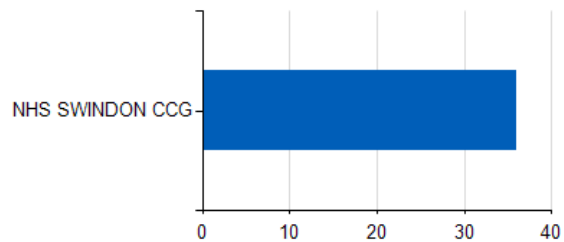
MR2b - Day of Week Arrival Profile



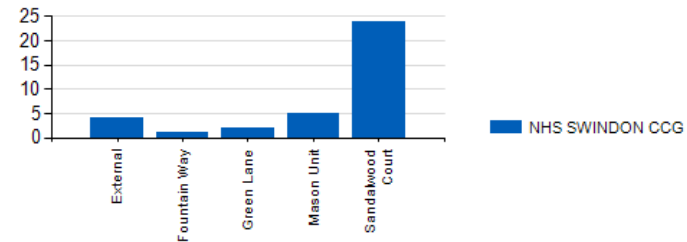
MR2 - Number of Detainees by time detained



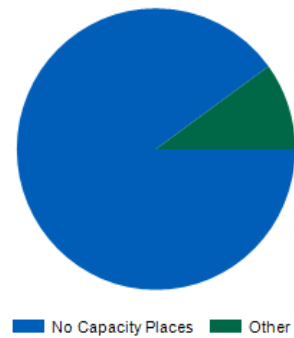
MR1b - Number of detainees by CCG



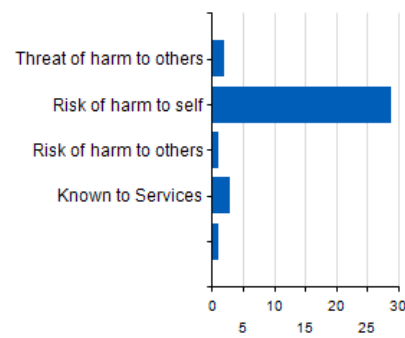
MR1c - Number of detainees by POS by CCG



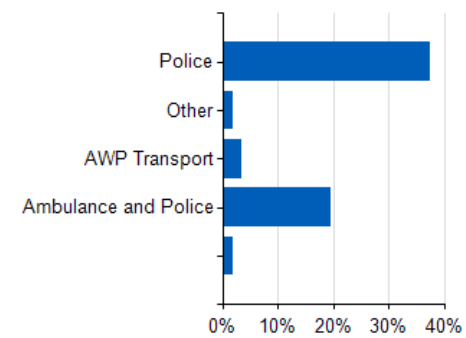
MR6 - Reason not offered a place



MR9 - Reason for detention



MR12 - Means of conveyance

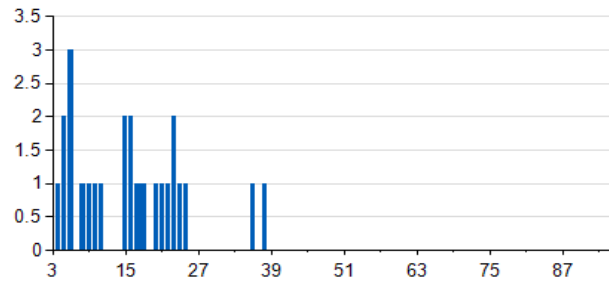


Place Of Safety activity Swindon CCG October 2016 – March 2017

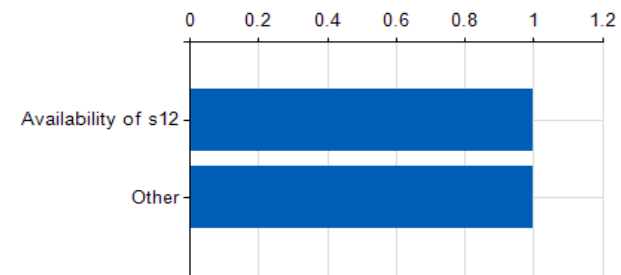
Page:

- Admissions
- Detentions**
- Discharges
- Demographics

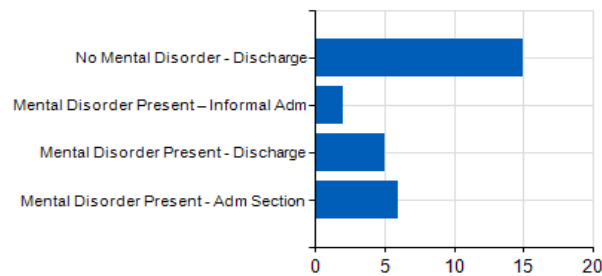
MR3 - Length of Stay Profile (hours)



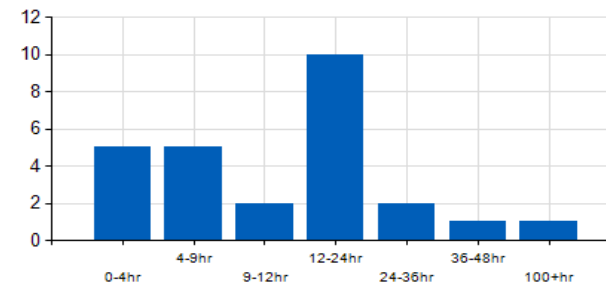
MR4 - Delay to assessment if over 4 hours



MR5 - Number of Assessments by Outcome



MR10 - Time to assessment



complaints (AVON AND WILTSHIRE MENT...
 Pw letter from investigator
 Hi Sarah and Newlands
 Further email from Ms Read which I will process tomorrow

Place Of Safety activity Swindon CCG October 2016 – March 2017

Page:

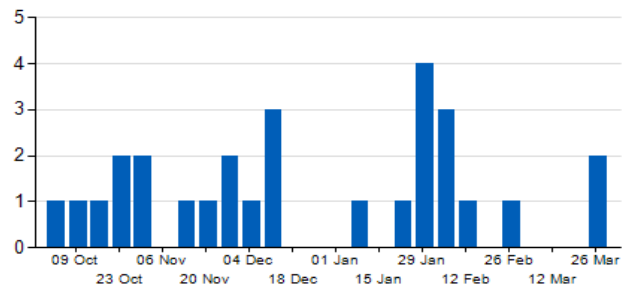
Admissions

Detentions

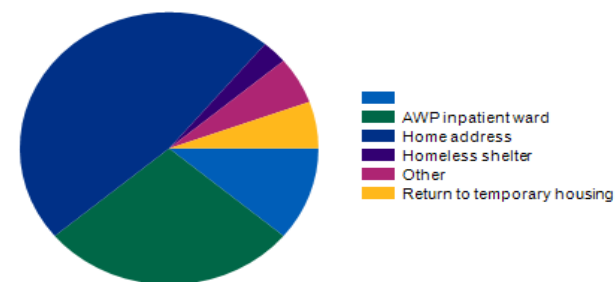
Discharges

Demographics

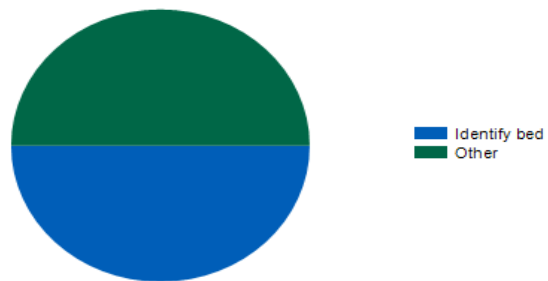
MR2c - Detainees discharged, by week



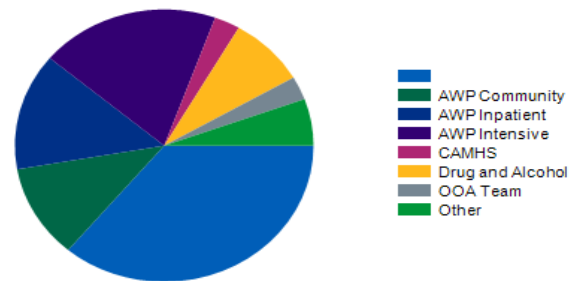
MR14 - Discharge Destination



MR11 - Discharge Delay Reason



MR13 - Mental Health Follow-Up



Place Of Safety activity Swindon CCG October 2016 – March 2017

Page:

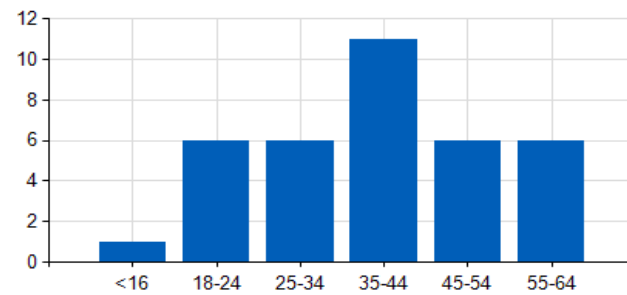
Admissions

Detentions

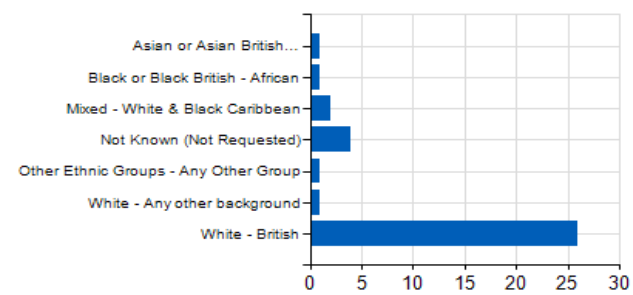
Discharges

Demographics

MR8a - Age profile of Detainees



MR15/16 - Ethnic profile of Detainees



MR8b - Gender Split of Detainees

