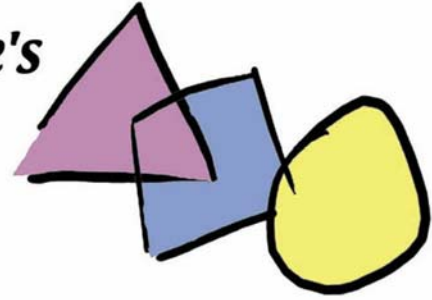


*Children & Young People's  
Strategic Partnership*  
**Swindon**



# **CHILDREN & YOUNG PEOPLE'S PLAN**

**2008 – 2011**

**Improving Children &  
Young People's Lives -  
Narrowing the Gap**

Final 23.5.2008

Swindon has published a new Community Strategy *A Shared Vision for Swindon 2008 – 2030* and a new *Local Area Agreement*. We want to use this opportunity to publish a new Children & Young People's Plan. It has enabled us to review and refresh our existing priorities for children and young people so that ***all children and young people have the best start in life*** and we reduce the gap in outcomes for vulnerable children and all children.

In relation to children and young people, we have seen population changes. There has been a 9% increase in the birth rate for Swindon in 2007. We have many more families continuing to arrive from minority ethnic communities (Asia in particular) and Europe and there are more children with dual heritage in our schools. There are now 91 languages spoken in schools.

Economically Swindon is thriving with many major UK companies choosing Swindon as their head office, high average earnings and a high rate of new company start-ups. Significant challenges remain. The population is forecast to rise from 186,600 to 250,000 by 2026. The aspirations and educational attainment of young people is variable and high levels of inequalities remain for vulnerable children in the areas of disadvantage compared to all children. Future education provision will be characterised by the development of neighbourhood learning communities. These learning communities and extended services in schools will play a key role in promoting community cohesion, social, economic and neighbourhood regeneration. This will be achieved through the promotion of linked learning, care and cultural opportunities, underpinned by a seamless partnership of schools, colleges, the University, libraries, integrated locality teams for children and young people and children centres.

These new opportunities and challenges mean that we need to work with partners to address our key priorities outlined in the new Children & Young People's Plan. These have been developed through analysis of what is working well, and what still needs to be done, taking account of the views of children and young people. We have held participation conferences with children, young people and parents and workshops with professionals.

On behalf of the Children & Young People's Partnership Board we would like to thank all children, young people, parents and professionals who have contributed to the development of this Plan over the past twelve months.



John Gilbert  
Group Director Children  
Swindon Borough Council

Garry Perkins  
Lead Member Children  
Swindon Borough Council

## **Contents**

### **Part 1 Priorities and action**

Vision and principles

Priorities for 2008 – 2011

Local and national context

Participation by children, young people, parents and carers

Investment in local services

The five outcomes

Be healthy

Stay safe

Enjoy and achieve

Make a positive contribution

Achieve economic well being

### **Part 2 Making it happen**

Integrated working through Integrated Locality Teams for Children & Young People, children's centres and extended services

Integrated processes through the Common Assessment Framework, Local Preventative Groups and Contact Point

Integrated strategy through Joint Commissioning Arrangements, Workforce Strategy, school place planning and school building

Integrated governance through Children's Trust arrangements and joint planning and development of services

### **Part 3 Resources**

Performance management and review of the Children and Young People's Plan

Population needs and services

Glossary

National Indicator Set baseline data

Children & Young People's Plan Delivery Plan

## Vision

We believe that

**“Children and young people in Swindon deserve the best start in life and we want them to enjoy life, to achieve, to stay safe from harm, to be healthy and to grow up to be successful adults in a loving, caring environment.”**

In order to ensure a focus on well being and safeguarding, local organisations are working together through the Local Safeguarding Children Board (LSCB) and the children’s trust arrangements prioritising:

- Strong core services
- Intervening early in children and young people’s lives when there are difficulties
- Improved integrated working.

**Our principles for developing services are:**

- High quality
- Accessible for all
- Effective involvement of children, young people, parents and carers
- Ensuring equality for all taking account of race, religion, gender, disability and sexual orientation
- Ensuring the safety of children underpins all provision
- Providing local solutions
- Demonstrating improvements in outcomes for children and young people
- Reducing inequalities.

**In order to narrow the gap in outcomes between the most vulnerable children and all children, we will implement 10 golden threads based on evidence-based research from the national Narrow the Gap Programme**

- Expecting the best of all our children and having high aspirations for them
- Working with parents and building on the strengths in each family
- Having children at the centre of everything we do
- Holding on to the baton so that all services offer continuity in delivery for children and young people
- Building resilience so children are happy and able to learn
- Having a wide range of experiences for children in and out of school through sports, arts, leisure
- Integrating our services so that children benefit from a multi disciplinary approach
- Celebrating the skills and knowledge of our workforce

- Building on what works best so services demonstrate measurable improvements
- Agreed vision and priorities across all partners

### **The development of the Children & Young People's Plan**

The new Community Strategy – *A Shared Vision for Swindon 2008 – 2030* is the overarching strategy for Swindon and sets the context for the Local Area Agreement where all the agencies in Swindon have identified thirty priorities for the town. Six of the thirty priorities relate to children and young people including an ambition to improve the educational achievement of all children.

The Children & Young People's Plan includes all the Local Area Agreement priorities and the Swindon 2010 Promises and targets aimed to improve outcomes for children and young people. It is a multi agency plan based on the five Every Child Matters Outcomes and the National Service Framework for Children, Young People and Maternity Services and identifies the actions to make improvements happen.

The Children & Young People's Plan was informed by the following evidence:

- The annual needs profile including data from the school census, performance data from services and surveys and participation meetings with children, young people, parents and carers. The needs profile also identifies trends in performance against similar authorities and the national average data available on [www.swindonlaa.org.uk](http://www.swindonlaa.org.uk);
- Changes in population profile using school based;
- An assessment of how services have achieved improvements in outcomes for children;
- Tell Us Survey completed by 1,198 children and young people on line during May 2007. This survey was part of a national survey conducted by Ofsted with children in Years 6 (11 year olds), 8 (13 year olds) and 10 (15 year olds). Swindon's sample was significantly higher than most other local authorities, giving confidence in the judgements made by young people;
- Two conferences with 40 – 50 young people at each event in February and November 2007, where young people completed activities on specific priorities in workshops and shared the results with professionals;
- Meetings with parents of disabled children through the Special Educational Needs Forum and the Parent Advisory group, which feed their views directly to the Disabled Children's Partnership Board.

**This evidence was discussed with children, young people, managers and staff in two conferences in November 2007 and February 2008. A further conference in March 2008 developed high-level actions. This information was brought together in the Children & Young People's Plan draft for consultation. During the consultation process, further discussions with managers, young people, the Schools Forum and the Children & Young People's Partnership Board were undertaken.**

During the development and consultation process a number of critical issues were identified:

- Significant educational, social and health inequalities in Penhill, Gorse Hill & Pinehurst, Park North and South, Walcot East, Central and Moredon reflected in all three needs assessments (2004, 2007 and 2008) and the need for services to target these communities;
- Persistent low scores for Swindon particularly in the areas of disadvantage in the Indices of Deprivation Domain (2004) for education, training and skills and the consequent need to focus on raising aspirations of all children and young people;
- An increase in the number of children and young people from diverse communities in primary schools and the potential impact on services to meet the needs of these children, the need for secondary schools to prepare for meeting the need of a more diverse group of children;
- A sharp focus on early intervention and prevention to address children's needs early so that the needs for complex and expensive specialist services is reduced;
- A commitment to ensure that children, young people and parents are involved in the evaluation and development of services.

**This has resulted in eight Outcomes we want to achieve and six of eight are part of the Local Area Agreement (LAA)**

#### **Be healthy**

##### **Children grow up to be healthy and have the best start in life LAA**

Reduce all age, all cause mortality across Swindon (NI120)

Reduce the year on year rise in obesity of children in year 6 to 17.24% by 2011 (NI56)

##### **Children respect each other and are emotionally secure and confident**

Promote the emotional health of children (NI50)

Reduce bullying among children to 16% by 2011 (NI69)

#### **Stay safe**

##### **Children are safe, vulnerable children are identified early and have their needs addressed and complex problems are prevented LAA**

Increase referrals going to initial assessment to 58% by 2011 (NI68)

##### **Children have stable lives**

Reduce the number of looked after children to 220 and reduce those placed with independent providers to 33 by 2011

#### **Enjoy & Achieve**

##### **Children achieve at school and have high aspirations. The gap between the achievement of vulnerable children and all children reduces LAA**

Improve achievement of all children and young people, particularly at Key Stage 3 and Key Stage 4 to that of similar authorities by 2011

Narrow the gap for children who are vulnerable so that there are no schools with more than 30% achieving less than their peers at Key Stages 4 (16 national indicators)

#### **Make a Positive Contribution**

### **Young people are healthy and safe LAA**

Reduce teenage conception rates to 24 per 1,000 by 2009 and 2010 (NI112) and reduce chlamydia rates from a baseline to be established in 2009.

Reduce the number of young people involved in illegal substance misuse and consumption of alcohol and more young people completing substance misuse treatment LAA (NI115) to 70 by 2010

### **Young people are valued, have their voice heard and enjoy themselves LAA**

Increase young people's involvement in positive activities from a baseline to be established in 2008 by 10% (TBC) 2011 (NI 110).

### **Achieve economic well-being**

#### **Young people have the opportunity to succeed LAA**

Reduce the percentage of young people aged 16 to 18 not in education, training or employment to 5.4% by 2011 (NI117).

In 2008 services for all children and young people and those with additional needs will be delivered through five Integrated Locality Teams for Children & Young People:

- North
- Central North
- Central South
- South
- Integrated Services for disabled children and young people.

Children's social care services for children in need and those in need of protection will be co-located with the geographically based teams. The Disabled Children Team (Social Care) is co-located with the Integrated Service for Disabled Children at Salt Way. There will be a specialist service for children and young people in care.

Since April 2008 the Local Authority has become responsible for making arrangements for the delivery of Connexions services. These include statutory responsibilities, which include:

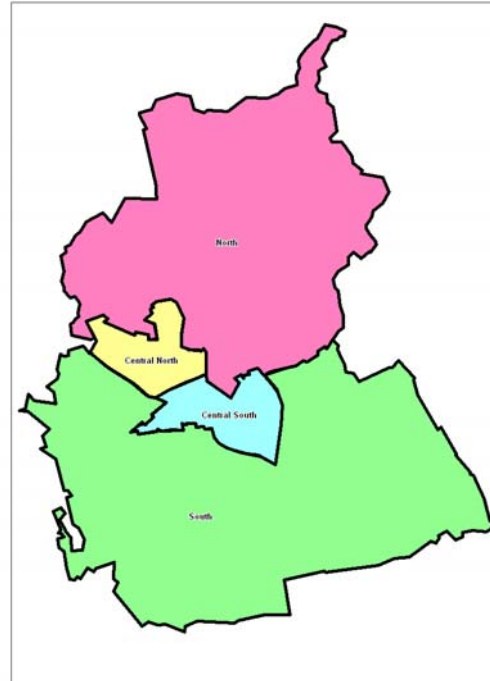
- The provision of the Connexions Service under Section 114 of the Learning and Skills Act 2000
- Conducting assessments relating to learning difficulties under Section 140 of the Learning and Skills Act
- provision of careers services under Sections 8 and 9 of the Employment and Training Act 1973



The needs assessment completed in 2007 and refreshed in 2008 also analysed all data based on wards and aggregated this to four geographical neighbourhoods. Two managers' conferences, a stakeholder event for schools and for partners developing extended services and children's centres analysed the information for each of the five Integrated Locality Teams for Children & Young People. This work identified priorities, which are highlighted at the end of each chapter.

Swindon Borough Council (SBC) and partners plan to introduce an integrated Neighbourhood Management model in respect of its service delivery, led by the Local Area Agreement Partnership. The initiative is branded "*Connecting People Connecting Places*" and has the following four key strategic aims:

1. Enabling citizens to better influence local decision making
2. Focus on better local access to services
3. Development of localised service delivery
4. Schools at the heart of their community



## National and local context

### National Agenda

The Children & Young People's Plan is informed by a range of legislation and statutory guidance affecting children and young people, for example

- Children Act 1989
- Children Act 2004
- National Service Framework for Children, Young People and Maternity Services
- Every Child Matters and Youth Matters Next Steps
- Public Health White Paper “ Choosing Health”
- Health White Paper “Our Health, Our Care our Say”
- Working Together

The National Service Framework published in 2004 is a 10 year strategy, which sets out standards for health and social care services working with children, young people, expectant mothers, fathers and parents.

These are the eleven standards:

- |   |
|---|
| 1. Promoting Health and Well-being                    |
| 2. Supporting Parenting                               |
| 3. Children, young people and family centred services |
| 4. Growing up into adulthood                          |
| 5. Safeguarding and promoting welfare                 |
| 6. Children and young people who are ill              |
| 7. Children and young people in hospital              |
| 8. Disabled children and young people                 |
| 9. Mental health and psychological well-being         |
| 10. Medicines   |
| 11. Maternity Services                                |

Over the past two years new statutory requirements have been introduced, which are reflected Children & Young People's Plan:

- *Education and Inspection Act 2007*
- *Child Care Act 2006*
- *Adoption Act 2006*
- *A new duty on schools to promote well-being and community cohesion*
- *World Class Commissioning*
- *The Children's Plan 2007*
- *Children's Trust draft statutory guidance 2008*
- *Care Matters 2007*
- *Aiming High for Disabled Children 2007*
- *Aiming High: 10 Year Youth Strategy 2007*
- *Child Health Promotion 2008*

## The local context

The total population in the Borough is 186,600 and projected to rise to 250,000 in 2030.

The number of children and young people in primary and secondary schools has remained at similar levels since 2006 at 47,341 (0 – 19). 6.3% of children are under the age of five and 18.6% of children are under the age of 15. There are 41,619 parents with dependent children.

Age-Group	2001	2007	2008	2010	2011	2015	2016
0-4 years	11,344	11,349	11,284	11,299	11,361	12,071	12,255
5-9 years	12,035	11,523	11,625	11,781	11,870	11,819	11,824
10-14 years	12,112	12,214	12,186	12,222	12,097	12,216	12,245
15-19 years	10,373	12,170	12,246	12,401	12,435	12,391	12,203
0-19 years	45,864	47,256	47,341	47,703	47,763	48,497	48,527

There have been significant changes in the population in Swindon

- A 9% increase in number of births to 2,665 in 2007;
- An increasing number of children from minority ethnic communities and Europe and this trend is continuing. As of October 2007 15.1% of children in primary schools are from minority ethnic communities and diverse backgrounds (rise from 13.9% in January 2007). The rise has been mirrored in secondary schools from 11% in January 2007 to 11.9% in October 2007, The largest increase has been among Asian children and young people at both primary age from 5.6% (January 2007) to 6.1% in October 2007 and secondary age 4.8% to 5.2% in October 2007. The second largest rise is among 'White Other', including children from Eastern Europe at primary age rising from 2.6% to 2.9%. In geographical terms, the largest rise in the total black and minority ethnic communities has been in the South area (West Swindon in particular) from 13.9% to 15.6%. Central North has risen from 5.4% to 7.1%;
- An increasing number of languages are spoken by children in Swindon schools. A total of 91 languages are spoken and the largest group is children speaking Konkani (an Indian dialect) followed by Polish, Bengali and Portuguese. The percentage of children reported to be speaking a first language other than English has risen from 6.5% in January 2007 to 8.5% in October 2007, which is the highest rise in the South West
- Minority ethnic communities from wide ranging cultural background with diversity of languages and religions;

- An increase in the numbers of children and young people with autism and complex health needs from 58 in 1999 to 219 in May 2008 requiring more specialist services.

### **Participation of children, young people and families**

The following participation activities have taken place in 2007:

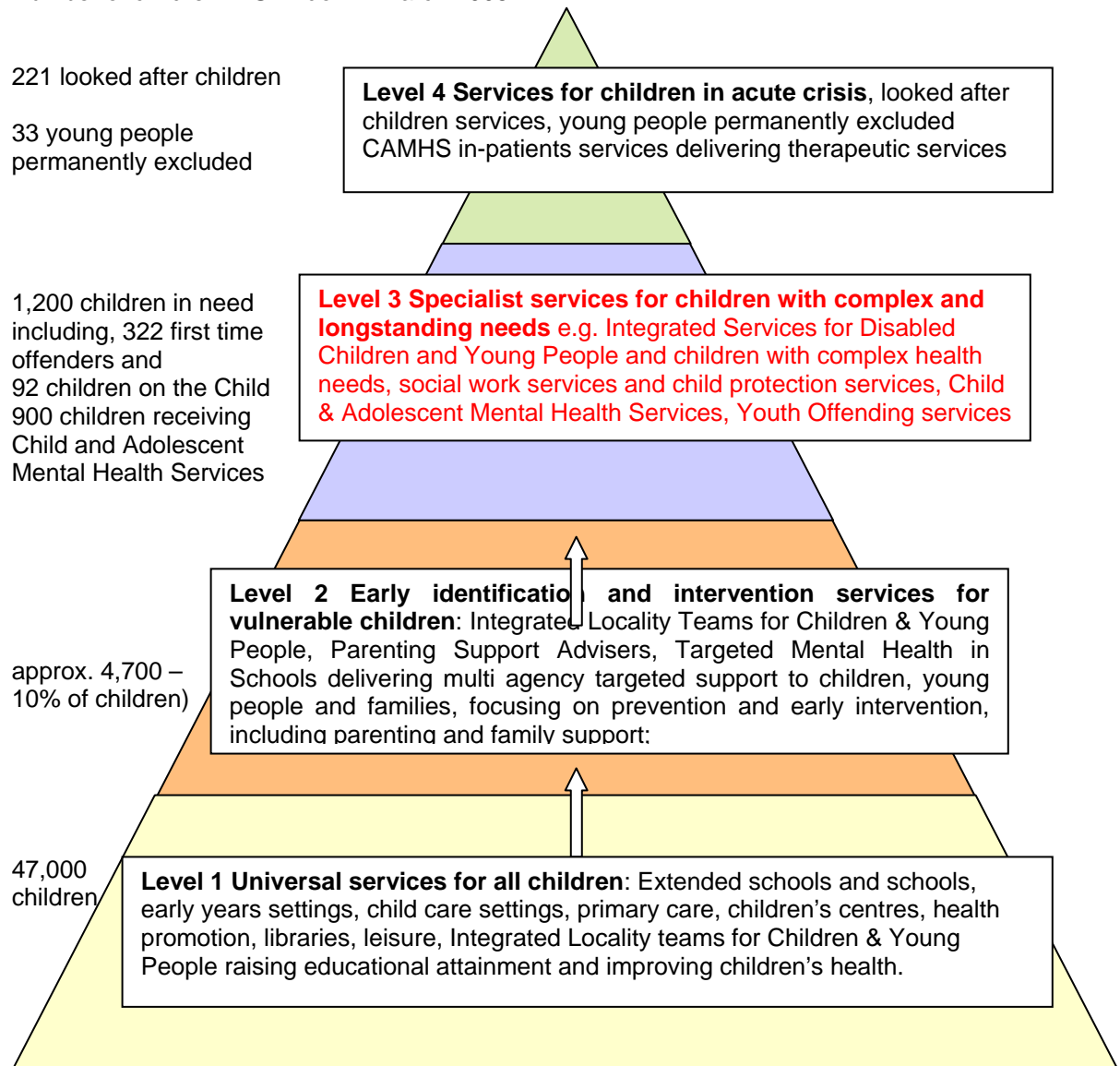
- Two workshops focused on addressing bullying, better sex and relationship and drug education Task groups have been established with young people to develop actions on reducing bullying and improved sex and relationship and substance misuse education;
- A survey of 800 young people through the Connexions service focusing on issues young people raise in their local areas and where and how young people would like to seek help and support;
- A survey of 440 pre-school children and those using after school care about the activities children would like more of;
- Feedback by young people about the Early Interventions Service (Children's Fund) led to staff training on resources and creativity. This increased staff confidence and improved engagement of children and young people;
- Young people in care designed a questionnaire , which was sent to 150 young people and the results informed the Corporate Parenting Strategy for children in care;
- Parents of disabled children are members of the Disabled Children's Partnership Board, have advised on developing a Direct Payment Scheme and are piloting the South West Regional Standards for Participation. A Parents Advisory Group is in place, which will support the development of all services for disabled children and young people. Participation by parents has led to the development of resource centres on the sites of mainstream schools;

## Investment in local services

### Investment in local services

Replace with windscreen insert 2

Number of children in Swindon in March 2008



Total PCT	£8,424,000
Swindon Borough Council Children Services	£27,754,000
Dedicated Schools Grant	£131,004,000
Learning & Skills Council	£2,274,000
Universal services	£140,255,000
Preventative services	£7,695,000
Specialist services	£11,093,000
Specialist placements	£10,413,000

Cost per child (to be displayed in a chart)

Universal services including education & learning is £ 290 per individual (47,000 children)

Preventative services £1,637 per individual (4,700 children)

Specialist services £5,283 per individual (2,100 children)

Specialist placements and packages for children in care £41,653 per individual (250 children)

The Children & Young People's Plan is resourced and linked to the Medium Term - Financial Resources Plan. As part of this process resources are re-allocated to priority areas. The principles of value for money are well embedded, linked to good planning. New procurement processes are supporting continuous improvement. The Capital Investment programme continues to be reviewed and updated to reflect demographic growth as well as supporting the implementation of the multi-disciplinary teams. The settlement for schools based on a per pupil allocation for 2008/09 shows that Swindon remains a low funded authority, the indicative dedicated schools grant allocation demonstrates that Swindon has the 17th lowest Local Authority settlement in England. The Personal Social Services settlement for Children and Families per population under 18 planned for 2006/07 was 22% lower in Swindon (£368) than the national average at £448. This low settlement is reflected in the lower expenditure in family support services per capita for under 18 year olds with planned investment in Swindon of £41 per capita compared to the national average of £70 per capita. Investment in safeguarding, prevention and early intervention has been a priority and the outcomes of the Children's Fund, Family Support Services and Local Preventative Groups demonstrate improvements in outcomes for children and young people.

## **The five every child matters outcomes**

This section of the Children & Young People's Plan sets out our priorities and how we aim to improve the lives of all children and young people and particularly those who have additional needs. We will work in all five of the key outcome areas of Every Child Matters:

- Be healthy
- Stay safe
- Enjoy and achieve
- Make a positive contribution
- Achieve economic well-being

Our goal for each outcome is to improve the lives of children and we have linked this to the vision in the *Community Strategy – A Shared Vision for Swindon 2008 – 2030*. Our Local Area Agreement priorities are outlined under each outcome. These have been developed through analysis of what is working well, and what still needs to be done, including the results of surveys of 2,000 children and young people, participation conferences with children, young people and parents and workshops with professionals. The priorities have been identified as those indicators that will make the most impact in improving outcomes for children and young people, particularly in areas of disadvantage. There are also a small number of local priorities based on the views of children and young people and parents and carers. We have included some areas of good performance to provide a more complete picture. A full analysis of performance and detailed actions and timescales for lead officers are attached in the Resources Section of this plan as part of the Children & Young People's Plan Delivery Plan. Information against our performance as key national indicators and our targets are also attached in the Resources Section.



## **Be Healthy – A healthy, caring and supportive community**

**Our shared vision for Swindon is:**

**Children grow up healthy and have the best start in life. All schools, early years settings and children's centres will be promoting children's health and well being so they are ready to start school. Children's emotional health will be promoted. Bullying will not be tolerated. Inequalities in people's health will be significantly reduced. Local people will be more aware of the benefits of healthy eating, increased physical activity and not smoking.**

### **What is going well in Swindon?**

- Most children are physically healthy and have a healthy lifestyle. Physical health of children is good with continued good immunisation levels with on average 95% of children immunised at age 2 against major conditions and 90% of children immunised aged 5 against Mumps, Measles and Rubella. Firm foundations have been laid for a healthy start in life with an increase in mothers breastfeeding at birth from 72% in 2005/2006 to 75% in 2008;
- Schools actively promote the health of children and young people with 80% of schools having achieved the Healthy Schools Status;
- Health of children in care is good with 90% having a health assessment;
- More young people are accessing substance misuse treatment up from 40 in April 07 to 64 in March 2008;
- 86% of children have access to hot school lunch against target of 73% for 2007;
- Parents are supported well. At Robert le Kyng Children's Centre, there has been a 100% reduction in the level of depression in mothers following the introduction of a post natal depression group. 80% of parents receiving services from the NSPCC said that their level of self esteem and confidence increased;
- Services for disabled children are good and are now co-located at the Saltway centre including the Child Development Centre. As requested by parents, they can access a holistic integrated service and their children can now be assessed in a familiar environment, a service requested by parents;
- Bullying and anti-social behaviour are addressed by agencies. 22 schools have started to participate in the Anti-Bullying Accreditation Scheme as part of the Healthy Schools Plus programme. There were 22 parenting contracts and four parenting orders between April and September 2007. Teachers and parents of 60% of children participating in groups in schools run by the Child and Adolescent Mental Health project reported improved self control;
- A number of projects and programmes are delivered across Swindon to provide opportunities for young people and children to participate sport and physical activity. Children and young people can access sport at any level, from recreational to competitive, through Leisure Services, Recreation Centres and local Clubs;

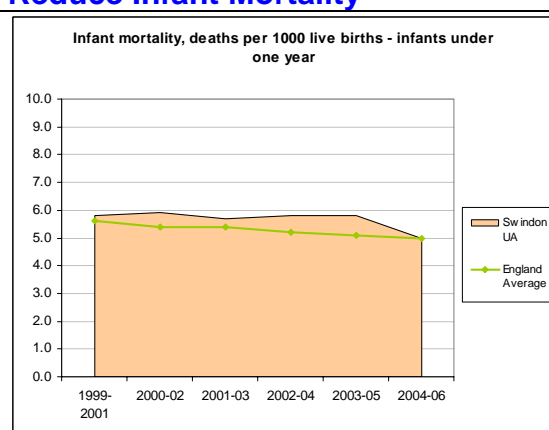
- Leisure Services host two annual events for children and young people with disabilities to 'taste' a variety of sport. In excess of 200 children and young people attend.

### What do children and young people and their parents say?

- Based on a local survey of 1,100 children and young people, most young people say they are very or quite healthy;
- Young people at the conferences said that they wanted good health and sexual health and relationships and drugs education. In particular young people want sex and relationship and drugs education delivered by qualified and confident staff and more youth health clinics. The majority of young people are aware of health risks. The Tell Us survey found that the majority of young people (78%) said they had never smoked (73% nationally, Tell Us Survey).

### Where do we need to improve to ensure children grow up healthy and have the best start in life?

#### Reduce Infant Mortality



	1999-2001	2000-02	2001-03	2002-04	2003-05	2004-06
England Average	5.6	5.4	5.4	5.2	5.1	5.0
Swindon UA	5.8	5.9	5.7	5.8	5.8	5.0

Infant mortality is an indicator of health inequalities and in Swindon the rate is higher than the national average. Those who are at risk of losing their babies are likely to live in social and economic areas of disadvantage. Factors such as smoking in pregnancy, which is also higher in Swindon than the national average, increases the risk of infant deaths as does drug and alcohol misuse. Other vulnerable groups include teenage mothers, single parents and those from ethnic minority communities.

#### Children are healthy and have the best start in life by reducing all age, all cause mortality (NI120) including infant mortality through:

- Implementation of Maternity Matters through 14 children's centres reaching 14,000 children by 2011 so that children have the best start in life and the level of low birth weight babies and rate of infant mortality reduces (**Swindon 2010 Promise 45**);
- Delivering a targeted programme for parents-to-be from minority ethnic communities and diverse backgrounds through 11 phase 1 and phase 2 children's centres so that children and families access services at the earliest opportunity by 2010 and thereby promote healthy lifestyles;
- Roll out the learning from Sure Start to the Midwifery and Health Visiting Service in other children's centres to reach more parents in areas of disadvantage
- Develop and implement a

<p>Lead: Deputy Director Public Health Strategic Partnership: Early Years Strategic Partnership Resources:</p>	<p>service specification for maternity services prioritising the known causes of health inequalities and subsequent infant mortality.</p> <ul style="list-style-type: none"> <li>• Continue to focus smoking cessation programmes in areas of disadvantage.</li> <li>• Maintain immunisation rates for children aged 2 at 95% and children aged 5 at 85%,</li> </ul> <p>Delivery Plan Outcome 1 Priority 1</p>
--	--

### Reduce the year on year rise in obesity among children

**Reduce Year on Year Rise in Obesity of Children in Year 6**

Year	National	Swindon
06/07	17.5%	17.3%
09/10	17.24%	17.0%

Obesity in children and young people is rising nationally and is affecting their long-term health. Swindon Primary Care Trust (PCT) data demonstrates that the child obesity rate was 17.3% in year 6 compared to 17% nationally. Few health problems are identified in obese children but they may develop long term conditions in later life such as high blood pressure, type II diabetes, hypertension and some cancers. Negative body image can cause bullying, depression and social problems. We know that breastfeeding is important in improving the physical health of babies and promotes a healthy lifestyle and reduces the risk of obesity. Breastfeeding at birth has been good. However, breastfeeding reduces significantly at eight weeks, particularly in areas of disadvantage. School food provision is an important factor in ensuring that children and young people eat healthily while at school. This includes breakfast clubs,

**Children grow up healthy by reducing the rise in obesity by 2011 to 17.24% in year 6 (NI56), through the:**

- Development of the Public Health Role and Service Model for Public Health Nurses within Integrated Locality Teams for Children & Young People to support the health improvement agenda including child obesity, physical activity, looked after children, smoking cessation and giving parents consistent health messages in diet and nutrition by 2009;
- Integration of children's services between Swindon PCT and Swindon Borough Council through four co-located Integrated Locality Teams for Children & Young People including 14 children's centres by 2009/10;
- Implementation of the Obesity Strategy;
- Continue to offer physical activities and programmes aimed that these children and families, for example MEND;
- Implementation of the School Meals Strategy Action Plan 2008-10 and increase number of pupils taking a school meal that meets Food and Nutritional standards;

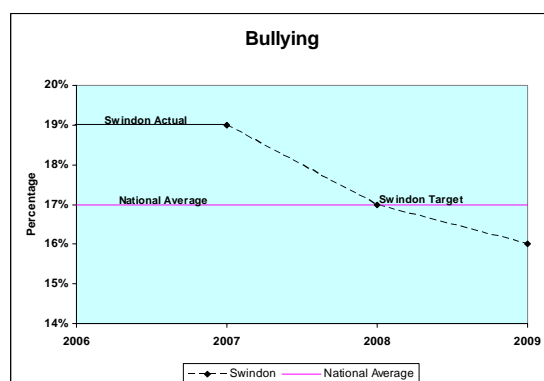
<p>school lunch, vending, and break time provision.</p> <p>Lead: Deputy Director of Public Health Strategic Partnership: Healthy Schools Partnership Resources:</p>	<ul style="list-style-type: none"> <li>• Completion of a common assessment and offer of a lead professional from Integrated Locality Teams for Children and Young People delivering targeted youth support services and children's centres for all young mothers by 2009 so that they are supported in caring for their child;</li> <li>• Implementation of evidenced based parenting programmes in all 14 children's centres by 2011 reaching vulnerable parents to reduce inequalities and promote healthy lifestyles;</li> <li>• Move from Healthy Schools Programme to Healthy Schools Plus for 70% of schools.</li> </ul> <p>The necessary actions, lead officers and timelines will be detailed in CYPP Delivery Plan Outcome 1 Priority 2</p>
---	--

## Where do we need to improve, so children respect each other and are emotionally secure and confident?

### Improve emotional health and reduce bullying

<p>Children with good emotional and social skills, high levels of confidence and resilience are more likely to achieve their full potential. A large number of children and young people require specialist mental health services each year and a 15% rise in appointments is projected for 2007/08. In the first 11 months of 2007/08 there were 6,365 appointments attended by children at the Child and Adolescent Mental Health Services (CAMHS) compared to 6,101 for the whole of 2006/07. CAMHS delivers a programme in targeted primary schools and 82% of children participating in groups reported increases in self-esteem in 2007/08.</p> <p>Lead: Director Strategy &amp;</p>	<p><b>Children respect each other, are emotionally secure and confident by promoting their emotional health (NI50) through:</b></p> <ul style="list-style-type: none"> <li>• Implementation Review of Primary Mental Health Service and place mental health practitioners in Integrated Locality Teams for Children &amp; Young People so that children receive appropriate intervention early and reduce the need for specialist services in 2009;</li> <li>• Implementation of Targeted Mental Health in Schools Programme in 2008 in 4 secondary schools and cluster primaries to build resilience and positive behaviour of children in areas of</li> </ul>
---	---

Commissioning  
Strategic Partnership: CAMHS  
Commissioning Group  
Resources:



During the consultation events with up to 50 young people in February and November 2007 children and young people said they continue to be concerned about bullying at school

disadvantage. This will contribute to raising aspirations and attainment and ensure access for children from minority ethnic communities and diverse backgrounds and needs to link with wider work on Healthy Schools and Healthy Schools Plus Programmes;

- A programme of parenting support advisers across all clusters of schools providing evidence based interventions to promote emotional well-being and strengthen link between home and school;
- A service specification for Specialist Child & Adolescent Mental Health Services and Services for Disabled Children leading to improvement in outcomes for all children;
- Roll out Baby Bonding service to the whole of Swindon following evaluation of first phase through further training and support from specialist CAMHS;
- Tendering of specialist CAMHS services with a clear service specification, so the emotional well-being of children improves.

#### CYPP Delivery Plan Outcome 2 Priority 3

Reduce bullying among children and young people including racist and homophobic bullying to 16%(Tell Us 4 survey) in 2011 (NI69) by:

- Establishing a group of children and young people who determine what actions need to be taken in schools to reduce bullying;
- Increasing the number of schools who achieve the Anti Bullying Accreditation Standard

<p>There is a need to extend the effective local programmes across more schools. The percentage of children and young people that had been bullied was similar to the national average with 19% who said they had been bullied in the last four weeks in Swindon compared to 17% nationally. 59% of children said that their schools dealt well or quite well with bullying. Children who are bullied don't do as well at school and are likely to be less confident. Young people who have been subject to homophobic bullying do much better at school if there is a culture within schools, which challenges offensive language and does not tolerate bullying.</p> <p>Lead: Director Services to Children &amp; Young People Strategic Partnership: Anti Bullying Group</p>	<p>to 30 by 2011 and a further 30 starting the process.</p> <ul style="list-style-type: none"> <li>• Using SEAL, the Children's Fund Programme, Restorative Justice and Targeted Mental Health in Schools to support preventative work on bullying;</li> <li>• Implementing the Foundation for Peace programme based on a good practice model from Warrington Foundation for Peace.</li> </ul> <p>CYPP Delivery Plan Outcome 2 Priority 4.</p>
---	--

## Local Priorities

### Central North and North

- Target mothers-to-be through children's centres so that the percentage of women breast feeding increases and their support needs are addressed, particularly for those moving into the north area.

### Central South and South

- Work with schools, agencies and staff in developing culturally competent services so that the needs of a growing population from minority ethnic communities and those from Eastern Europe are addressed, and identify champions from each community group.

### Priorities for Disabled Children and Young People

- Offer integrated services for Disabled Children from Saltway centre



## **Stay Safe – A caring and supportive community**

**Our shared vision for Swindon is:**

**Children & young people are safe and have stable lives. Services will be delivered locally through Integrated Locality Teams for Children & Young People. Children's needs will be identified early and there will be extensive support for parents so their children grow up to be safe. Swindon will be a place where individual and community beliefs, cultures and abilities are recognised and valued. It will also be a place where strong and positive relationships are developed between people of different backgrounds in schools and within neighbourhoods.**

### **What is going well?**

- Most children and young people with additional needs are identified early and intervention is provided to address their needs. The common assessment has been effectively implemented thereby improving the support, planning and co-ordination for vulnerable children and reducing inequality in access to services. 200 children and young people identified in 2007 had a joint plan agreed and a lead professional allocated as a single point of contact, so that services are co-ordinated, the need for specialist complex services is reduced and outcomes for each child improve. Early intervention through use of the common assessment and work on thresholds with schools and agencies has led to a reduction in the referral rate for social work (405 per 1,000 children) and is below the rate of similar authorities;
- The Safeguarding Board is well established and ensures that the performance of agencies in relation to safeguarding is scrutinised so that children are safe from maltreatment, violence and neglect. Joint Child Protection procedures have been published with Wiltshire and an extensive multi agency training programme is in place. There is evidence that following an assessment, services are put in place and are effective in avoiding a repeat referral for social work services from Children and Families. The repeat -referral rate for social work has reduced from 23% in 2006/07 to 19% and is better than in similar authorities;
- Outcomes for children on the Child Protection Register are good. Children are immediately allocated to qualified social workers and 100% of reviews are completed on time. There were 92 children on the Child Protection Register in February 2008 a similar level to other authorities. Children's needs on the register are addressed and the re-registration rate is low at 12%, indicating that children have effective plans, which result in their long term safety. The completion of core assessments on time is good at 90% and above similar authorities, so that children's needs are understood and addressed;
- Outcomes for children in care are good with most children (90%) in stable short term placements and 60% in long term stable placement (56% in April 07). 98% of children have an allocated social worker providing a stable relationship and 81% of reviews were completed on time. Elected Members promote the well-being of children in care and have agreed a

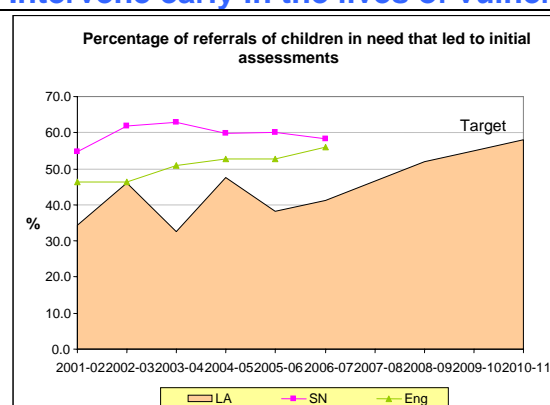
Corporate Parenting Policy, and ensure improvements in outcomes of children in care through the Corporate Advisory Board;

- Children who are permanently separated from their parents are adopted where possible and the rate of adoption is good at 9%;
- Most children are safe from accidental injury with the number of children killed or seriously injured reduced to 6 in 2007 **Swindon 2010 Promise 50**;
- A pilot project led by the Local safeguarding Children Board for children who show sexually harmful behaviour resulted in four young people receiving treatment services;
- Disabled children in care are allocated to qualified social workers and a good transition process is in place with Adult Services.

### What do children and young people say

- Three quarters of children say they feel safe in their local area and over 95% feel safe at home and school;
- Young people said they worried most about exams, friendships, being healthy, school-work and bullying (Tell Us Survey). If worried, the vast majority of young people talk to their friends (73%), followed by family members (37%) and teachers (17%). Telephone help lines, sports coaches and youth workers accounted for less than 6% each.
- Young people from the Youth Forum have suggested ways of making the use of the internet safer and for workers to protect young people from cyber bullying;

### Where do we need to improve so children are safe and identified early? Intervene early in the lives of vulnerable children



	2001-02	2002-03	2003-04	2004-05	2005-06	2006-07
LA	34.3	46.0	32.5	47.5	38.2	41.2
SN	54.7	61.9	63.0	59.9	60.2	58.2
Eng	46.3	46.3	50.8	52.6	52.7	56.0

#### Identify vulnerable children early

Of those children referred, the percentage of children who receive an initial assessment from a social worker was low in the past but has improved

Children are safe, vulnerable children are identified early and have their needs addressed and complex problems are prevented by increasing referrals going to initial assessment to 58% by 2011 (NI68) by:

- Implementing a single point of assessment and multi agency planning for vulnerable children through the common assessment process and linking this to planning for children in need of social care services;
- Co-location of the Referral & Assessment Team with four-Integrated Locality Teams for Children & Young People so that a seamless service between targeted and



to 53%. More assessments need to be completed on time, so children receive help quickly. Domestic violence has profound consequences in the lives of individuals, children and families. It is therefore important that children are identified early and provided with help and support. Domestic violence is a significant factor in referrals to social care when problems are complex. 25% of Local Preventative Groups have identified domestic violence as a risk factor, which had not been addressed.

Lead: Director Children & Families  
Strategic Partnership: Every Child Matters

Resources:

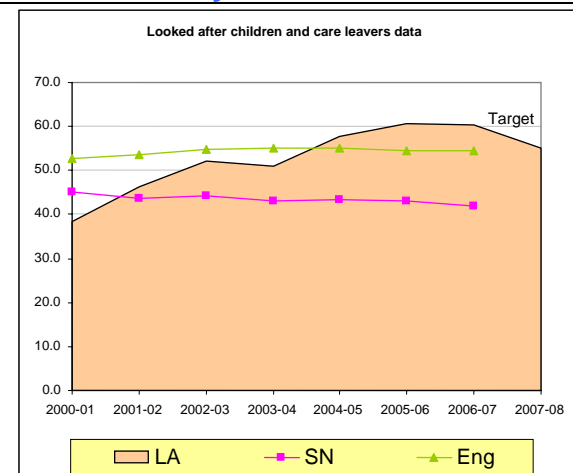
specialist services is established;

- Implementation of four Integrated Locality Teams for Children & Young People delivering holistic targeted services for vulnerable children, undertaking common assessments and lead professional role so that the number of children referred to specialist services reduces and children receive services at the earliest opportunity
- Implementation of Parenting Support Strategy across all agencies with additional Parenting Support Advisers in 12 school clusters and four expert parenting advisers so that vulnerable children are identified early and the number of referrals to social care reduces to 411 per 10,000;
- Re-commissioning targeted family support services in line with the Parenting Support Strategy, with a requirement on all service providers to undertake common assessment, lead professional role and delivery of individual parenting support in the home in 2009 to achieve family stability;
- Publish a new 3 year Domestic Violence Strategy and implement delivery plan;
- Deliver a targeted programme for 20 children and mothers who have experienced domestic violence in 2008 rising to 50 children and parents in 2010, building improvements in resilience in children and increasing capacity of the parent;
- Child Protection training deliver to Faith Communities;
- Quality Assure Child Protection

	<p>processes through monthly LSCB thematic audit;</p> <ul style="list-style-type: none"> <li>• Evaluate the effectiveness of Child Protection training delivered- twice yearly.</li> </ul> <p>The necessary actions, lead officers and timelines are detailed in CYPP Delivery Plan Outcome 3 Priorities 5.</p>
--	---

## Where do we need to improve so children have stable lives?

### Reduce family breakdown



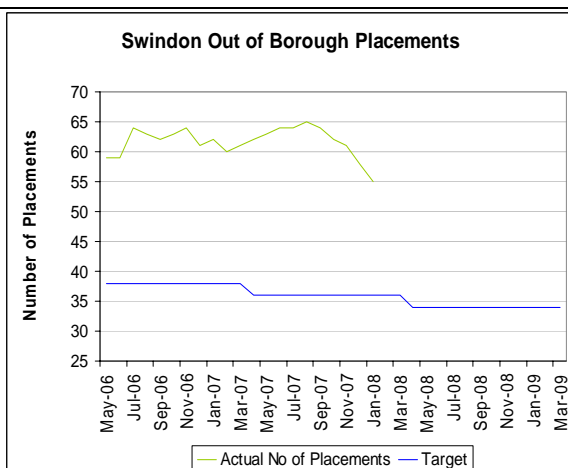
	2000-01	2001-02	2002-03	2003-04	2004-05	2005-06	2006-07
LA	38.4	46.4	52.0	50.9	57.8	60.7	60.4
SN	45.0	43.7	44.2	43.0	43.3	43.1	42.0
Eng	52.6	53.5	54.7	55.2	55.1	54.6	54.6

Children do best when they are securely attached to parents and carers who meet their needs throughout childhood and on to independence as adults. Preventing family breakdown is therefore important in providing stability. Reducing the number of children in care placed outside Swindon with independent providers is also critical so that children maintain links with their community and, family.

The number of children in care has reduced to 221 following the success of an improved planning process for children in need and the use of Family Group Conferences but the number remains above those of similar authorities. The Swindon 2010 Promise has been met.

Children have stable lives by reducing the number of looked after children to 50 per 10,000 children by 2011 and reducing the number of children placed with independent providers outside Swindon to 33 by 2010 (**Swindon 2010 Promise 29**) by:

- Implementing Adolescent Support Project to reduce the number of young people becoming looked after and involve the Police and Youth Offending Team in this;
- Increasing the use of Family Group Conferences by promoting multi agency use and making this part of the work of the five Integrated Locality Teams for Children & Young People;
- Ensuring the Targeted Mental Health Programmes reach children from minority ethnic communities by developing the programme in partnership with parents and carers;
- Increasing the provision of short term breaks for disabled children and young people;
- Identifying the most vulnerable families who are at risk of offending and anti social behaviour and undertaking a family assessment so the needs of the family can be met as part of a multi agency plan and through targeted work by parenting advisers and the planned Family Intervention Project;
- Review health and education services for children in care including addressing bullying including racist and homophobic bullying so



The number of children placed outside Swindon reduced from 62 in April 2007 to 53 in March 2008. The high number is due to the number of children coming into care with complex and high levels of need. A number of children are placed with long-term carers outside Swindon ensuring stability and security for them. There is a need to increase the provision of short-term breaks for parents and carers to enable them to look after their children with complex and high levels of need.

Lead: Director Children and Families  
Strategic Partnership: Placement Panel  
Resources:

children feel safe through implementation of Care Matters;

- Improve the link between the Special Educational Needs Resource and Assessment Panel and Children's Social care Services so that joint plans can be agreed for children with complex needs.

The necessary actions, lead officers and timelines are detailed in CYPP Delivery Plan Outcome 4 Priorities 6

## Local Priorities:

### The North

- Focus the work of integrated youth services as part of Integrated Locality Teams for Children & Young People on developing ways of reducing bullying, as it was this issue that young people were concerned about.

### Central North and Central South

- Work with schools and multi disciplinary teams in identifying vulnerable children earlier and address their needs and reduce the referrals to Children's Social Care Services and the number of children on the Child Protection Register.

### South

- Implement Targeted Mental Health in Schools project in developing culturally competent services so that services are accessible and

appropriate for children and young people from minority ethnic communities and particularly those from Eastern Europe.

### **Priorities for Disabled Children and Young People**

- Increase the provision of short-term breaks for disabled children and young people in line with Aiming High for Disabled Children. This will include opportunities to take part in physical activity, active recreation and sport.

**Enjoy and Achieve – A place where high aspirations are supported by superb education provision for all ages**

**Our shared vision for Swindon is:**

**Children & Young People achieve at school and have high aspirations**

**The gap in educational achievement between children from low income and disadvantaged backgrounds and their peers narrows;**

**Children will increasingly be aiming high and achieving well. All children and young people will enjoy achieving challenging personal educational targets. Overall educational standards in primary and secondary schools will be above the English average. Schools won't just seek a high academic standard but will ensure that young people are encouraged to become good citizens who play their part in shaping and caring for their community. Areas with historically lower levels of educational achievement will be targeted to ensure pupils reach their full potential. There will be an opportunity for children, young people and their families to interact and share experiences with people from different backgrounds.**

#### **What is going well?**

- Most children are ready to start school. Progress of establishing children's centres for children under 5 is good. The implementation of a substantial training programme by the Early Years Team has ensured significant progress in the implementation of the new Early Years Foundation Stage curriculum and progress of children at Foundation Stage is good;
- Children enjoy and achieve at school. We have implemented the School Improvement Partner arrangements ahead of time and our process has been rated good by the National Strategies. The School and Learning Directorate carry a rigorous challenge and support programme across all school to ensure improving standards. Results are good in primary schools with Key Stage 1 and 2 results above national average and in line with similar authorities;
- The Secondary Strategy team works intensively with targeted secondary subject departments. At Key Stage 3 results improved significantly in 2007, so that English and science are in line with the national average;
- Targeted intervention and support by the Local Authority has improved results in schools through a range of initiatives such as the Intensifying Support Programme, The number of schools where children were doing less well in both English and maths reduced from six schools in 2006 to two schools in 2007, demonstrating the success of LA initiatives such as work with boys on reading and writing;
- The number of schools in special measures in the borough has reduced to zero as a result of Local Authority task group activity;
- The Diversity and Ethnic Minority Achievement team are working to ensure BME pupils make progress in their schooling so that children from minority ethnic communities now achieve well at Key Stage 4;

- Children with additional needs enjoy school and make good progress. School attendance is good with less than 7.3% of young people in secondary schools missing half days of education;
- Good support is in place supporting the process of developing a Statement of Special Educational Needs. 100% of statements were issued within 18 weeks and this performance is in the top 25% nationally;
- Significant numbers of children and young people visit museums every year. By November 2007, 8,072 visits had taken place;
- More children enjoyed school after participating in Stressbusters rising from 33% who said school was not boring to 61%.

### What do children and young people say?

- 60% of children and young people said they enjoyed school always/most of the time in the Tell Us Survey, a similar picture to the nationally;
- Nearly half (47%) of children and young people said they need a little more/better things to do;
- 430 pre-school (aged 3 – 4), and 215 out of school (aged 5 – 11) children took part in the survey to find out their preferred activities. Pre-school girls like painting while boys prefer playing on bikes and scooters. Pre-school boys like reading less than girls. Out of school children want to play outside, watch TV and play computer games, and do activities like cooking, art and sport.
- The Youth Forum members are requesting more sports, leisure, play and creative activities for young people where they live;
- 82% of children in care felt positive about school or college and the extra help they receive.

### Where do we need to improve so children achieve at school, have high aspirations and the gap between vulnerable children and their peers narrows?

#### Improve educational attainment

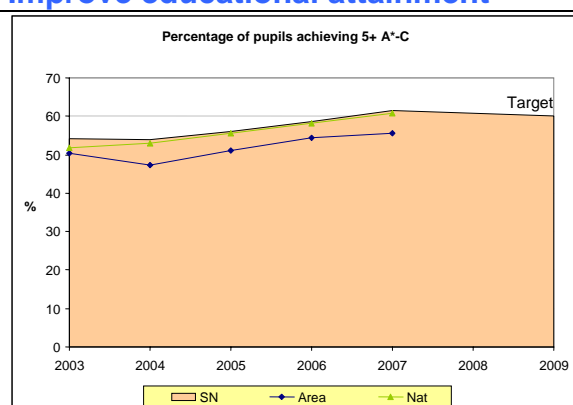


Table from Ofsted 2007

	2003	2004	2005	2006	2007
Area	50.33	47.31	50.99	54.36	55.54
SN	54.04	54.01	56.01	58.58	61.43
Nat	51.86	52.89	55.52	58.23	60.86

Children and young people achieve and have high aspirations by improving achievement of all children and young people, particularly at Key Stage 3 and Key Stage 4 (**Swindon Promise 2010 Promise 20**) to that of similar authorities by 2011 through:

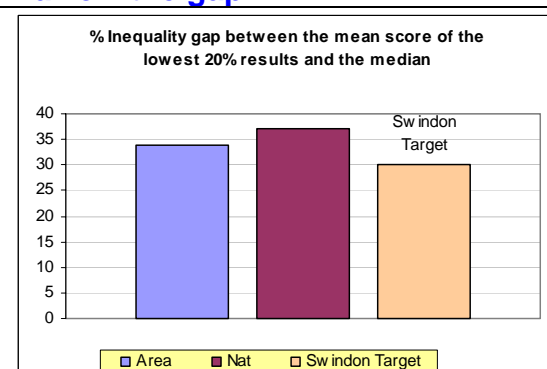
- Roll out to all secondary schools by 2011 the successful transfer and transition project
- Provide children and young people with Leadership and volunteering opportunities
- Enhance and extend

<p>Improve the achievement of young people at Key Stage 3 and Key Stage 4 so that more children achieve at school and have high aspirations, because achieving 5 + GCSE A-C increases social mobility and leads to success in later life. Currently, educational attainment in Swindon is below the national average at Key Stage 3 in maths. At Key Stage 4 results are less satisfactory. At secondary level, the Borough average is still below the national average. There was a national improvement of 2.43% in students achieving 5+A*-C GCSE to 61.8%, but in Swindon the percentage rose just 0.8% to 55.4%. For the first time in three years Swindon has failed to close the gap with the national average. Children in Swindon do not progress as well from Key Stage 2 (11 years) to Key Stage 4 (GCSE) and there is wide variation in progress within and among schools. Children living in areas of disadvantage do least well and have lower aspirations than their peers.</p> <p>Lead: Director Schools &amp; Learning Strategic Partnership: 14 – 19 Partnership Resources:</p>	<p>opportunities to participate in sport and physical activities in curriculum time as well as linking to local clubs (talent id)</p> <ul style="list-style-type: none"> <li>• Extending the Every Child a Reader programme through part funding individual or clusters of schools to employ and train specialist Reading Recovery teachers;</li> <li>• Implementing the Every Child Counts programme (roll out 2010-11);</li> <li>• Implementing the Improving Schools Program (formerly the Intensifying Support Program) in primary schools performing below the 65% floor target in English or maths and in under-performing and/or coasting schools;</li> <li>• The implementation of the GCSE Additionality Project support secondary schools to increase and target the provision of activities designed to raise aspirations and to continue to reduce within school variation to less than a 20% difference in GCSE outcomes between subjects;</li> <li>• Supporting secondary schools to improve the quality of leadership and management at all levels so that a significant percentage are judged to be good;</li> <li>• Supporting secondary schools to build on existing strategies and develop further strategies to improve the quality of teaching and learning so that a significant percentage of lessons are judged to be good;</li> <li>• Implementing the national diploma programme so that students have the entitlement of access to all 14 diplomas by 2013;</li> </ul>
---	---



	<ul style="list-style-type: none"> <li>• Building additional primary schools in Wichelstowe and the Northern Sector, and expand secondary school places, as required, to meet increasing demand for school places. Reduce temporary and unsuitable buildings (<b>Swindon 2010 Promise 28 and 17</b>);</li> <li>• Consolidate and promote incentives for students at universities to work in Swindon and promote Swindon in the national press to attract high quality leading staff.</li> </ul> <p>The necessary actions, lead officers and timelines are detailed in CYPP Delivery Plan Outcome 5 Priority 7</p>
--	---

## Narrow the gap



The gap for children who have additional needs and don't do as well as their peers continues to exist. Significant numbers of primary aged children have continued to arrive over the past two years from Europe and Asia (the Indian subcontinent) At Key Stage 1 and 2 results for Indian children in writing rise slowly as pupils have English as an additional language. Progress is also slower for children from 'white other' background, which includes children from Eastern Europe. Schools now have a duty to promote community cohesion and promote interaction between children and families from different

Narrow the gap for children who are vulnerable and reduce inequality so that there are no schools with more than 30% achieving less than their peers at Key Stages 4 by 2011 by:

- Supporting all schools to provide personalised learning and an inclusive education including for those from BME and traveller backgrounds, those who are new arrivals, and looked after children, including targeted information sessions for parents at school transition stages;
- Supporting schools in areas of disadvantage to become more effective in personalising learning for children and young people and effectively address the needs of children from minority ethnic communities increasing attainment at KS2 and 3;
- Supporting schools in making links with local partners and community groups so that

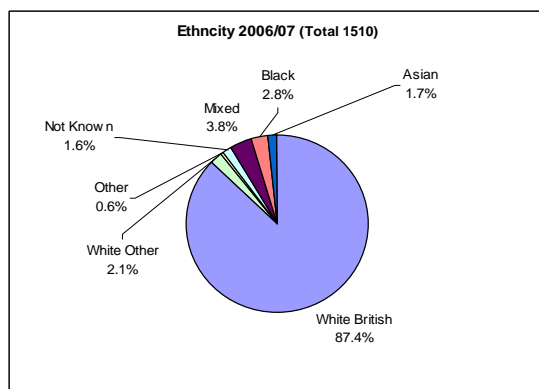
backgrounds;

Educational attainment of children in care at Key Stage 3 was low as the cohort included 50% with special educational needs. The percentage of young people in care with 5<sup>+</sup>GCSE A\* - C is 11%, in line with similar authorities but below the Swindon average. Numbers are too small for statistical analysis but too few children match the Borough average at all levels;

Young people living in areas of disadvantage and attending secondary school have a lower level of achievement than other children, particularly children living in Penhill, Gorse Hill & Pinehurst;

Young carers in Swindon are significantly underachieving at GCSE. Young carers achieved 29.6% 5<sup>+</sup>A\*-C GCSEs compared to a Swindon average of 55%;

There were 23 permanent exclusions between September 2007 and January 2008, compared to 33 in the academic year 2006/07.



There was also an increase in the number of young people from black and minority ethnic communities with a fixed term exclusion from 125 in 2005/06 to 147 in 2006/07.

Lead: Director Schools & Learning  
Strategic Partnership: Association of secondary, primary and special school head teachers

Resources

families and children from different backgrounds interact and learn from each other;

- Building on re-integration protocol and 'ready to return system' undertaken by the PRU in consultation with the Exclusion and Reintegration Officer to increase re-integration into schools where this is appropriate and thereby increase attainment of vulnerable young people at Key Stage 4 using a 3 – 4 week intervention model commissioned from the voluntary sector;
- Improving the educational attainment of children in care at key stage 2 (**Swindon 2010 Promise 33**) and key stage 4 by implementing relevant section of "Care Matters". Maintaining personal education plans for all children and young people in care, targeting Key Stage 3 and 4 and specific work at transition;
- Working with schools to establish a programme whereby all schools have systems to deliver regular up to date information to parents about their child's academic progress, attendance and behaviour at school;
- Extending the offer of up to 15 hours free early years education and child care to children aged 2 in the phase 1 children's centre areas by 2011;
- Continuing the delivery of MOLAG (Monitoring of Low Attaining Groups) data for schools so that children with special educational needs and those who are vulnerable make appropriate academic progress;
- Increasing access to support for parents through parenting support advisers and targeted

	<p>parenting programmes such as 24/7 enabling parents to identify risk taking behaviour early and seek advice by 2009;</p> <ul style="list-style-type: none"> <li>Analysing the information from 20 common assessments on Black young people and those of dual heritage to identify common factors leading to exclusion in 2009.</li> </ul> <p>The necessary actions, lead officers and timelines are detailed in CYPP Delivery Plan Outcome 5 Priority 8</p>
--	---

### **Local Priorities:**

#### **The North and Central South**

- Increase educational achievement of all children and children and young people in care and particularly for children aged 7 (Key Stage 1) and 11 years (Key Stage 2) in Central South.

#### **Central North and South**

- Improving the percentage of young people with five good GCSE (grade A\* – C);
- Improve school attendance of girls at secondary school as it is lower than the Borough average in Central North.

#### **Priorities for Disabled Children and Young People**

- Development of special resource provision to meet the needs of children with autism on mainstream school sites.

## **Make a Positive Contribution - A place where local people can have real influence and where they feel safe**

**Our shared vision for Swindon is: Young People are valued, healthy and safe.**

**Local communities will be working with public organisations like the Police, the Borough Council and a wide range of voluntary groups to reduce crime, keep people safe and develop a sense of community and belonging. People who misuse drugs and alcohol will be supported to make positive changes to their lives. Young people will have the opportunity to participate in shaping school life and the way that their locality provides facilities for them. People from all backgrounds, including those new to Swindon, will be encouraged to take part in activities that shape their local community.**

### **What is going well?**

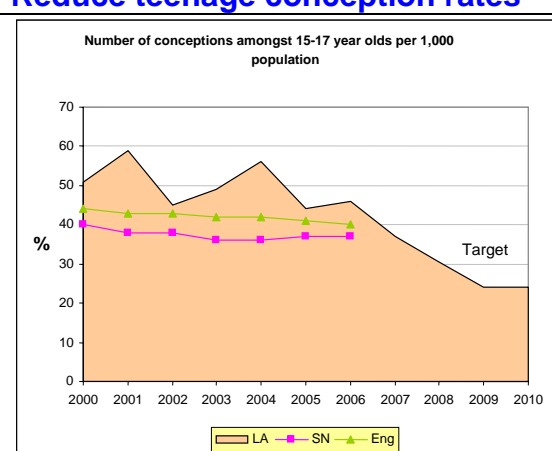
- Participation of young people in service development is good with establishment of Youth Forum and regular conferences where professionals and young people come together. Young people in care participate well through reviews (91.2%) and the corporate Parenting Strategy. Young people's participation, including disabled children, has shaped the plans providing integrated services for young people at the Old Railway Museum building and the planned Book Bar in the new Library;
- 41 young people trained as grant makers have distributed Youth Opportunities Fund/Youth Bank grants of £333,160.39 to youth projects involving over 8,000 young people;
- The Youth Offending Team is effective in reducing offending with 322 first time offenders in March 2008 below the target of 354;
- Opportunities for young people to volunteer have improved and are now satisfactory. The Duke of Edinburgh Award Scheme is available in all secondary schools and 1,000 young people are participating;
- Participation in the Youth Service has improved and is now satisfactory with 30% of young people participating in Youth Service activities (10% in 2006).
- There is good support for parents with vulnerable young people and addressing anti social behaviour. Successful partnership working with parents and New College has led to 200 parents voluntarily participating in parenting programmes with 94.6% of young people not of re-offending;
- The Direct Payment Scheme for disabled young people has been evaluated and launched as a full scheme increasing the number of parents or young people participating from 9 to 15 in April 2008.
- Young people currently have opportunities to participate in volunteering and leadership in sport, linking to local clubs and extracurricular activities.

## What do children and young people say?

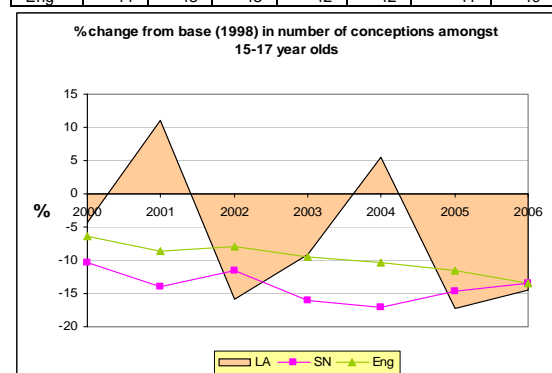
- The participation of young people is good and young people have commented on the success of the Youth Forum and conferences held and wanting to be more involved in changing services;
- 57% of young people completing the Tell Us Survey said that their views were listened to at school, compared to 52% nationally;
- 800 young people surveyed by Connexions said that they wanted more information through web sites, better premises for youth activities and more opportunities for accredited volunteering.
- Better information about contraceptive services and good information should be available through schools and youth centres.

## Where do we need to improve so young people are healthy and safe?

### Reduce teenage conception rates



	2000	2001	2002	2003	2004	2005	2006
LA	51	59	45	49	56	44	46
SN	40	38	38	36	36	37	37
Eng	44	43	43	42	42	41	40



	2000	2001	2002	2003	2004	2005	2006
LA	-4.3	11	15.8	-9.2	5.5	-17.3	46
SN	10.4	13.9	11.5	16.1	-17.1	-14.7	37
Eng	-6.4	-8.6	-8	-9.5	-10.3	-11.6	40

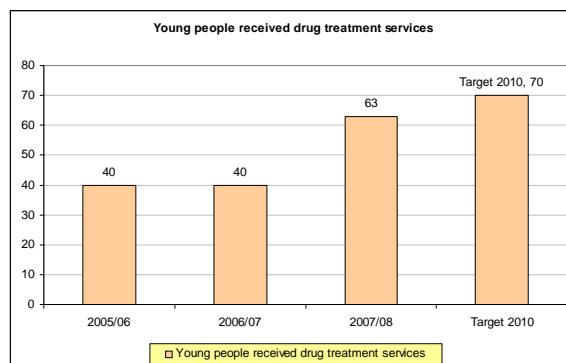
Teenage conception rates are high at 45.7 per 1,000 15 – 17 year olds girls in

Young people are healthy and safe by reducing teenage conception rates to 24 per 1,000 (NI112), and reduce chlamydia from a baseline established in 2009 through:

- Implementation of whole school approach to promoting and delivering good quality sexual health and relationship education in all secondary and primary schools by 2011, through working with schools and focus groups of young people so that education meets their needs;
- Commission 24/7 Parenting & Parent Support Advisers to deliver sex and relationship advice and information for parents;
- Development of use of drama with groups of young people delivering messages about the importance of sexual health;
- Targeting of vulnerable young people in year 9 in areas of high teenage conception with targeted sex and relationship education by 2009;
- Delivering of targeted sex and relationship advice and information for vulnerable young people identified by

2006 compared to 41 per 1,000 nationally. The highest rates of pregnancies are in areas of disadvantage. Some young women without good GCSE results are more likely to become pregnant. Not enough young people are using contraception and young people surveyed by Connexions were concerned about sexually transmitted infections.

Lead: Director Public Health  
Strategic Partnership: Teenage Pregnancy Strategy Board/Sexual Health Group  
Resources:



**Reduce the number of young people involved in substance misuse**  
Young people from vulnerable groups

Integrated Locality Teams for Children & Young People through the common assessment to prevent conception;

- Ensure training of all practitioners in sexual health and relationship issues so they are able and competent in offering advice and information by 2010;
- Delivery of good quality contraceptive services meeting needs of teenagers and ensuring all teenage parents receive timely and appropriate contraceptive services;
- Offer support to teenage parents through allocation of lead professional, ensuring support is in place and delivered by Integrated Locality Teams and children's centres;
- Implementation of a Chlamydia screening programme so 17% of all young people aged 15 – 24 are screened

The necessary actions, lead officers and timelines are detailed in CYPP Delivery Plan Outcome 6 Priority 9

Increase the number of young people successfully completing drug treatment services to 75 in 2011, by

- Delivering an effective treatment services
- Ensuring staff in Integrated Locality Teams for Children & Young People are trained in screening for substance misuse and refer young people appropriately for treatment;
- Delivering high quality



such as young offenders and those excluded from school are at risk of becoming involved with drugs and alcohol. 63 young people received drug treatment services in 2007/08. There are also strong links between misusing alcohol, teenage pregnancy and offending.

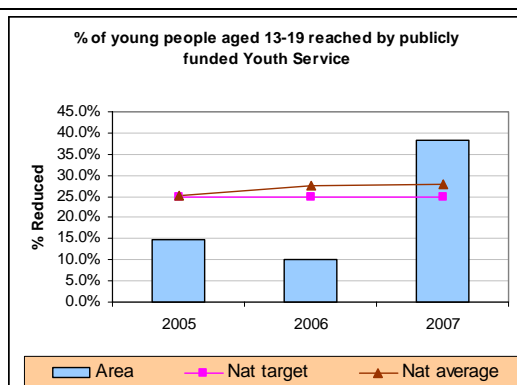
Lead: Director Strategy & Commissioning  
Strategic Partnership: Young People's Substance Misuse Commissioning Group  
Resources:

substance misuse and alcohol education programmes through Healthy School Plus Programmes in schools to prevent young people from becoming involved with drugs and alcohol;

- Ensuring that young people at risk receive good drug and alcohol education and intervention through Targeted Youth Support services and Positive Activities.

The necessary actions, lead officers and timelines are detailed in CYPP Delivery Plan Outcome 6 Priorities 10

## Where do we need to improve so young people feel valued, listened to and enjoy themselves? Improve access to positive activities



	2005	2006	2007
Area	14.7%	10.0%	38.4%
Nat target	25.0%	25.0%	25.0%
Nat average	25.1%	27.6%	28.0%

Young people need to feel valued and their achievements celebrated. Participating in activities such as volunteering and peer mentoring raises young people's self esteem and builds new skills and friendships. Young people consistently say that they would like a broader range of activities and better access to leisure and youth facilities in their local area.

Lead: Director Services to Children & Young People

Young people are valued and enjoy themselves by increasing young people's involvement in positive activities by 10% by 2011 (NI 110) through:

- Developing an entitlement for all young people to participate in positive activities including sport, arts and culture so there is a diverse programme on offer promoting pro social behaviour and 255 of young people participate in integrated youth services activities (**Swindon 2010 Promise 24**);
- Targeting groups of young people who are currently not engaging in positive activities through detached work and developing programmes with them to increase their skills and aspirations and prevent anti-social behaviour;
- Continuing Youth Banks in all four areas of the Integrated Locality Teams for Children & Young People, where young people select and monitor

<p>Strategic Partnership: Youth Matters Task Group</p> <p>Resources:</p>	<p>projects that achieve improved outcomes;</p> <ul style="list-style-type: none"> <li>• Ensuring the publication of good quality information about opportunities to participate in a range of activities that reach all young people;</li> <li>• Improving access to leisure, sport, arts and culture for all children and young people and particularly children in care and disabled young people so all of them have the opportunity to learn new skills and strengthen their resilience and self confidence;</li> <li>• Ensure participation of young people in service development through Youth Forum (<b>Swindon 2010 Promise 10</b>), conferences and task groups and targeted work with young people in care;</li> <li>• Developing and deliver training for staff to deliver Aiming High for Young People equipping staff with the skills to promote community cohesion and resilience and self-confidence in young people;</li> <li>• Produce Swindon YOT 'Youth Justice Plan' 2008/ 09 to Youth Justice Board timescales, (Capacity &amp; Capability Plan) promoting positive activities and preventing offending and promoting community cohesion within communities;</li> <li>• Complete bi-annual audit of National Standards for Youth Offending Teams compliance and Action Plans to address areas for improvement and report to YOT Board.</li> <li>• Implement a Pro-Social behaviour project with young people facilitated by the Royal Society for the Arts;</li> <li>• Engaging with Muslim youth to prevent disaffection and</li> </ul>
--	---



	<p>improve community cohesion.</p> <p>The necessary actions, lead officers and timelines are detailed in CYPP Delivery Plan Outcome 7 Priority11</p>
--	--

### **Local Priorities:**

#### **North, Central North and Central South**

- Reduce teenage conception rates, particularly in those wards with high rates such as Abbey Meads, Covingham & Nythe, Parks and Penhill and ensure good delivery of sex and relationship education.

#### **South**

- Address the concerns by 70% of young people surveyed about sexually transmitted infections.

#### **Priorities for Disabled Children and Young People:**

- Implement participation standards in relation to services for disabled children and young people and parents and carers.

## **Achieve Economic Well-Being – Swindon: a destination of choice**

### **Our shared vision for Swindon is:**

Young people have the opportunity to succeed. The number of children in poverty reduces **Young people will achieve well and there will be strong Further and Higher Education facilities and more young people will want to do further education, apprenticeships and training when they leave school. Young people will be helped to learn the skills and values that they need to be valued members of a caring and cohesive community.**

### **What is going well?**

- 92.8% of 16 year olds are in learning against a 2009 LAA target of 91%
- Good partnership work and sharing of good practice by the post-16 learning providers have improved the provision for attainment at level 2 and level 3 qualifications by the age of 19.
- A wider 14 – 19 education offer is in place through three new diplomas being developed, which will start in September 2008, followed by an additional four starting in September 2009;
- The 14 – 19 partnership is strong with leadership and management located within a wider 13 – 19 team with clearly defined responsibilities for developing partnership courses, engaging employers and providing high quality impartial information, advice and guidance;
- More young people enter apprenticeships;
- Services for disabled young people are effective and 85% were in education, training or employment in November 2007. Connexions and specialist Children's Social Care services have improved the joint work with care leavers and this has led to good performance for care leavers aged 19 in education, training and employment. Support for young offenders is good with 91% in employment, education or training;
- The quality and provision of child-care in Swindon has been good and increased through children's centres and private providers, two further nurseries with 87 places opened in March 2008;
- Seven out of school/holiday clubs have opened in the last year providing 200 additional places, and pre-schools have created 104 additional places.
- Sure Start Local Programme helped 21 people back into work or training and four parents at North Swindon Family centre found work after volunteering;
- 17% of eligible families took up the childcare element of working tax credit. This is an increase of 1% and is above the national average of 16%.

### **What do children and young people say?**

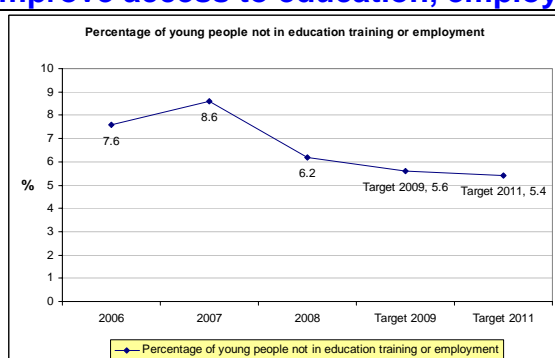
- UK Youth Parliament elections have taken place and Swindon has a newly elected UK Youth MP and a Deputy;
- 800 young people were surveyed by Connexions/Youth Services regarding their most popular option for receiving Information, Advice

and Guidance. 56% indicated in schools and colleges, 15% in Youth Clubs and 11% in the Town Centre.

- Better access to good quality information through schools, colleges and youth clubs about activities, volunteering, training and further education.

## Where do we need to improve so young people have the opportunity to succeed?

### Improve access to education, employment and training



Reduce the percentage of young people not in education training or employment because too many people under 18 are unemployed;

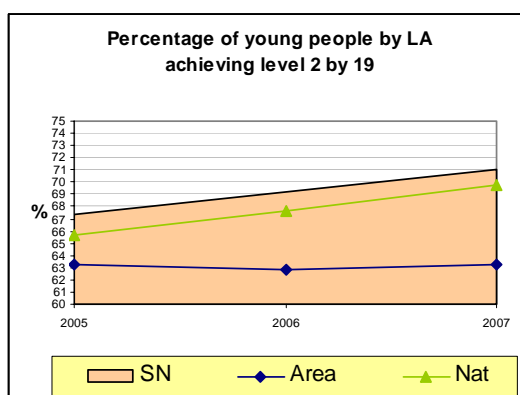
The current rate of those that are not in education, training or employment has significantly reduced to 6.2% and is now in line with similar authorities but there are still over 450 young people at any one time with no employment, education or training. There is a need to increase young people's skill base so that they are able to compete in an increasingly diverse labour market. Our data shows that the majority of young people who are unemployed live in areas of disadvantage, reinforcing inequalities in those areas.

Lead: Director Schools & Learning  
Strategic Partnership: NEET Strategy Group

Resources:

Young people have the opportunity to succeed by reducing the percentage of young people aged 16 to 18 not in education training or employment to 5.4% by 2011, (NI117) by:

- Continued implementation of the Strategy promoting education, training and employment so more young people have a good skills base including better tracking and financial incentives to learning;
- Implementation of three diplomas in 2008 and one in 2009 across a partnership of schools and colleges, increasing the offer of vocational skills based courses for young people;
- Focused work within integrated teams to improve ways of working to support 16-19s not engaged in learning;
- Ensuring that data is available regarding the specific needs of those not in education, training or employment so that there is accurate information around needs and gaps in learning provision and employment;
- Improving the employment and apprenticeship opportunities for young people through working closely with other partners and through the introduction of the National Apprenticeship



	2005	2006	2007
Area	63.3%	62.9%	63.2%
SN	67.4%	69.2%	71.1%
Nat	65.7%	67.7%	69.8%

Service;

- Improving work on the September Guarantee to ensure all young people leaving year 11, and 17 year olds who are not in education, training or employment or leaving a course, have an offer of a learning place by September. An action plan has been agreed;
- Improving transition planning and IAG through the implementation of the information Advice and Guidance (IAG) quality standards and a range of projects aimed at young people at transition;
- Develop proposals for three new diplomas in humanities, science and languages by 2011 to increase options and skills for young people.

Increase the percentage of young people with level 2 qualifications at the age of 19 to be in line with similar authorities, so young people achieve and are able to make a successful transition to adulthood by 2011(NI80):

- Build on current collaboration, to ensure stakeholders work together to create a learning community committed to making the vision a reality;
- Raise expectations of young people and significantly increase engagement in 14 – 19 learning;
- Enhance achievement and progression of all young people in the 14 – 19 phase and beyond;
- Ensure quality information, advice, guidance and support is available to all young people;

	<ul style="list-style-type: none"> <li>• Respond to the demands of the local economy and encourage further employment engagement in meeting the needs of young people;</li> <li>• Ensure all young people have access to effective and coordinated targeted youth support;</li> <li>• Ensure young people have access to constructive and positive leisure time activities across Swindon, including opportunities to gain leadership skills and qualifications;</li> <li>• Ensure the delivery of good quality delivery of the 14 – 19 offer for young people, reaching particularly vulnerable young people and those in areas of disadvantage.</li> </ul> <p>The necessary actions, lead officers and timelines are detailed in CYPP Delivery Plan Outcome 8 Priority 12</p>
--	---

**Local Priorities:**

**North, Central South, Central North and South and disabled children & young people**

- Reduce the rate of young people not in education, training or employment, particularly in those wards with high rates such as Abbey Meads, Parks, Penhill and Toothill.

## Part 2 Making it happen

Onion diagram

### **Children, young people at the centre of the Children's Trust**

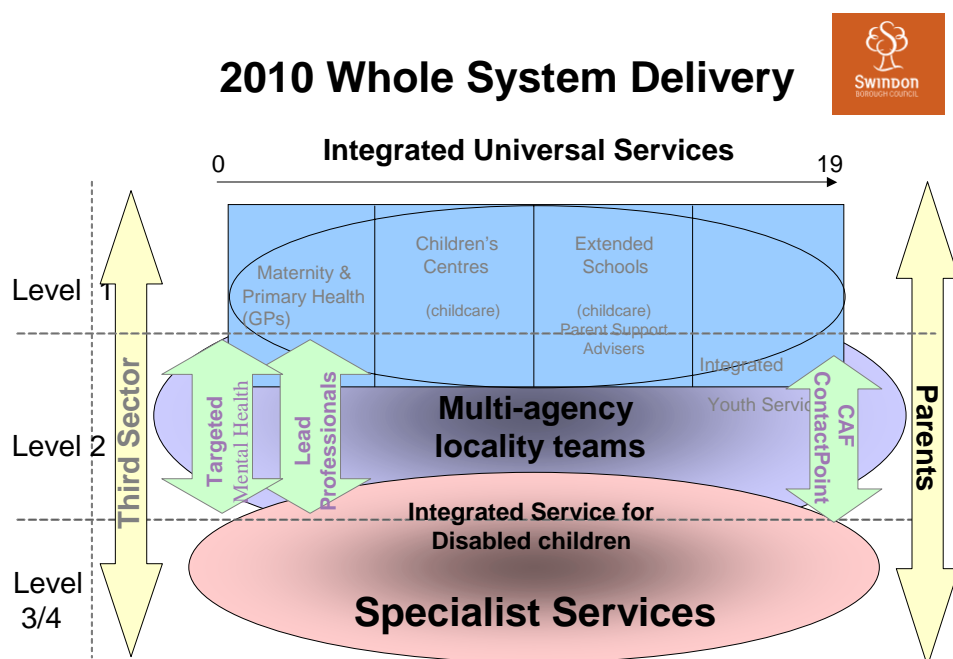
Children, young people and families are at the heart of the Children's Trust and involved in the decisions affecting their lives.

The Children's Trust partners have established the following ways of making sure that the views of children, young people, parents and carers continue to inform the way services are developed and evaluated:

- The Youth Forum brings together young people from a range of schools and organisations and meets every six to eight weeks. There are currently 30 young people members of the Forum who meet with the Cabinet Member for Youth and Children Services on a regular basis. The Youth Forum is supported by STEP 10 – 18 Project;
- Young people have elected a member for the Youth Parliament, who represents the views of young people regionally and is a member of the Youth Forum;
- Children and young people participate in conferences with managers of Children Services twice a year to raise issues and ideas for service improvements.
- All directorates in Children Services and a number of voluntary organisations have committed themselves to implement the national Hear by Right standards. Hear by Right measures the engagement of children and young people. Two training events were held with managers to implement Hear by Right Participation Standards across all agencies and teams, with a good response and an agreed baseline. We are working towards Level 3 where young people share responsibility for decision making with adults. Work with the Council around Disabled Children will link to the Hear by Right Agenda. This will enable us to involve disabled children and young people in decisions directly affecting them, as well as the strategic planning of services.
- All practitioners who facilitate the participation of children and young people meet quarterly as part of a practitioner forum sharing information and good practice. The group is responsible for the delivery of the Swindon Participation Strategy.
- Strategic managers come together in a Strategic Management Group for Participation. It ensures that messages from the Youth Forum, the Youth MP, Parent and Carer Groups and Conferences are presented by young people and parents and carers to the Children & Young People's Partnership Board, which leads the Children's Trust. The

Disabled Children's Partnership Board feeds directly to the Children's Trust Performance Review Group

**Repeat onion – make integrated working stand out**  
**Integrated working through children's centres, extended services, and**  
**Integrated Locality Teams for Children & Young People and the**  
**Integrated Service for Disabled Children & Young People.**

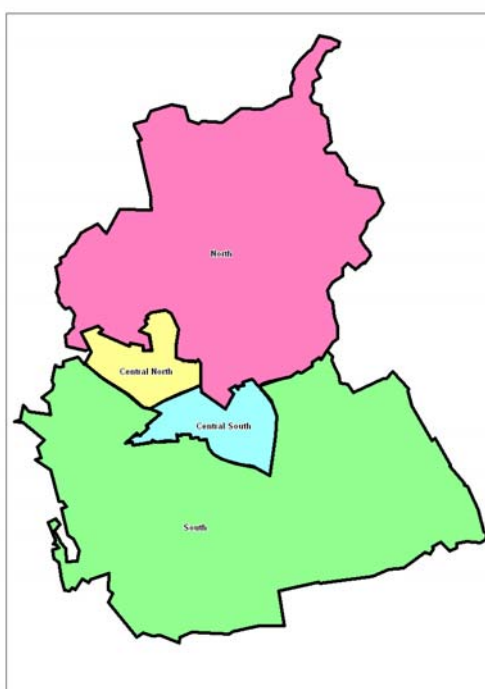


All partners within the Children's Trust arrangements have been working together since 2005 to develop multi agency integrated working across Swindon. Significant progress has been made during the past two years in establishing children's centres, schools and extended services providing strong universal services for all children. Swindon is committed to developing learning communities, where schools are at the centre of their community. Excellent progress has been made in establishing four Integrated Locality Teams for Children & Young People and the Integrated Service for Disabled Children & Young People. The four geographical teams are providing universal and targeted services for all children and those with additional needs as outlined in this model including integrated youth services and targeted youth support. A fifth team for disabled children provides specialist services at Saltway Centre. Social care services for children in need are aligned to the four geographical teams and integrated into the Disabled Children & Young People's Service.

The following four areas have been agreed by the agencies as the location of Integrated Locality Teams. The areas covered by the teams will be based on the following wards:



Central South	Park, Walcot, Eastcott, Dorcan, Covingham and Nythe, east part of Central (Drove catchment and Catholic schools);
Central North	Moredon, Penhill, Gorse Hill and Pinehurst, east part of Western;
North	Blunsdon, Highworth, Abbey Meads, Haydon Wick, Stratton St Phillip, Stratton St Margaret;
South	Shaw and Nine Elms, Freshbrook and Grange Park, Toothill and Westlea, west part of Western, west part of Central (Robert Le Kyng catchment), Old Town and Lawn, Ridgeway, Wroughton and Chiseldon.



### Children's centres

Eleven children's centres have been designated in Swindon offering universal and targeted services for children under the age of five. All children's centres have been developed with the active involvement of parents and represent a partnership between Swindon Primary Care Trust, schools, Swindon Borough Council, Swindon & Marlborough NHS Trust and the voluntary and independent sector. Where possible, children's centres have been co-located with primary schools and a number of centres are managed by schools. All children's centres offer access to child care, outreach and family support services and links with Job Centre Plus. Health services such as ante natal advice and support, breastfeeding and speech and

language and advice on healthy lifestyles are provided by health visiting staff as well as access to positive parenting programmes. Phase one children's centres already demonstrate improvements in outcomes in improving breastfeeding (Sure Start) and supporting mothers suffering from postnatal depression (Robert le Kyng). At Goddard Park, the children who have attended the Children's Centre day-care out perform all other categories of children in their PIPS scores at the start of reception. Drove children's centre has increased the participation of parents from minority ethnic communities leading to improved understanding of language and social development of children.

Children's centres are located at:

- Sure Start Children's Centre Penhill & Pinehurst
- Goddard Park Children's Centre (Parks & Walcot east)



- Robert Le Kyng Children's Centre (Central Ward)
- Drove Children's Centre (Central Ward)
- Eldene Children's Centre
- Moredon Children's Centre
- Gorse Hill Children's Centre
- West Swindon Family Centre Children's Centre
- Saltway Children's Centre (West Swindon)
- Saplings Children's Centre (Stratton)

A further four children's centres will open by 2011 in:

- Highworth
- Abbey Meads
- Wroughton & Old Town
- Haydon Wick

### **Extended Services**

All twelve school clusters involving primary and secondary schools are participating in developing extended services and a wide range of services is now offered across clusters. Multi-agency plans are helping the development of extended schools services and link to children's centres and Integrated Locality Teams for Children & Young People. All schools, including special schools, have development plans in place to provide:

- Access to wrap around child care from 8 am – 6pm all year round;
- A range of out of school activities, homework clubs and study support, drama and arts and links to adult education;
- Information to parents including transition sessions;
- Swift and easy referral to specialist services and Integrated Locality Teams for Children & Young People.

Extended services clusters will be recruiting parenting support advisers offering family support, early intervention and strengthening the link between school and home. The work of Parenting Support Advisers will be co-ordinated by Senior Parenting Support advisers who will provide training and consultation, link with Integrated Locality Teams for Children & Young People and the Integrated Services for Disabled Children & Young People.

### **Integrated Locality Teams for Children and Young People including the Integrated Service for Disabled Children and Young People**

The purpose of Integrated Locality Teams for Children & Young People is to implement a comprehensive approach to prevention and early intervention using a common assessment and single point of contact through a lead professional for children with additional needs. Children will benefit from a range of professionals working together, sharing expertise and skills whilst maintaining their professional standards and knowledge. All four geographically based teams will delivery universal and targeted services for

children aged 0 – 19. Integrated youth services and targeted youth supported will be delivered as part of the integrated teams. The Integrated service for Disabled Children and Young People offers specialist services for children aged 0 19 years of age. All five Integrated Teams for Children & Young People have been established and we have appointed Integrated Service Managers to lead each team. Integrated Service Managers are supported by Operational Managers in each team. Over 200 members of staff from Swindon Primary Care Trust have been seconded to Swindon Borough Council to form integrated services and this was approved by Cabinet and the Primary Care Trust Board in July 2007.

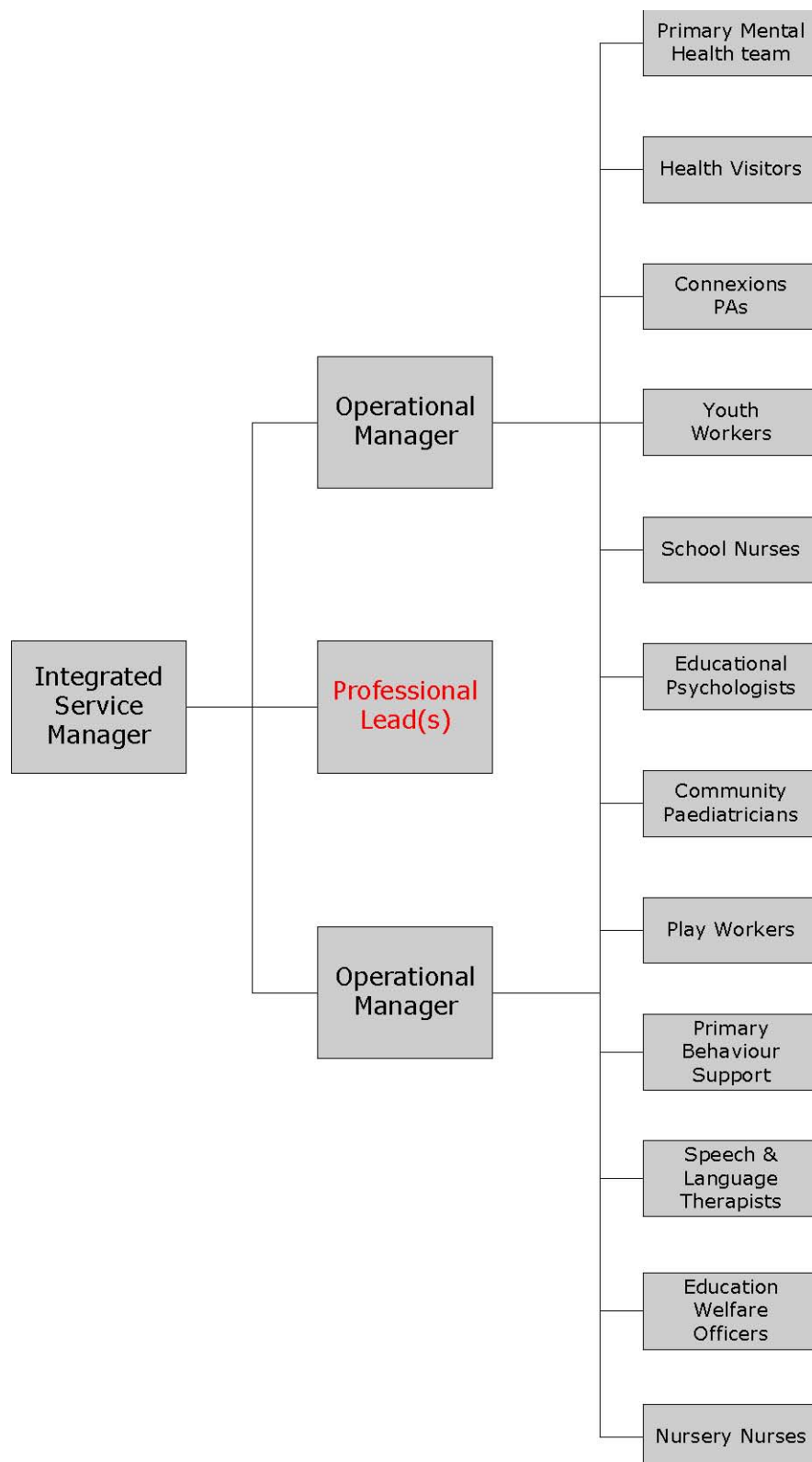
The Integrated Service for Disabled Children and Young People is already co-located at the Saltway centre and includes staff from Children Services including Children's Social Care, Swindon Primary Care Trust Swindon and Marlborough NHS Trust and the Ridgeway NHS Trust. It is planned that the Child Development Centre will operate from the Saltway Centre. Voluntary sector providers through Koalas Opportunity Group and children's centre are co-located at Saltway.

Voluntary sector staff could be co-located where possible at other multi agency bases and social work for children in need will be co-located with the four area based Integrated Locality Teams for Children & Young People.

A full change management programme has been implemented in 2008 and all managers and staff participated in discussions on management arrangements and the role of professional leads. This ensures that continued professional development and case related consultation is in place.

Reporting directly to the Integrated Service Manager, the Professional Lead will:

- Be accountable to SBC and PCT for keeping up-to date with current legislation and developments within the profession;
- Assign and co-ordinate work groups within the profession to reflect the needs of the various themes or work streams;
- Provide and co-ordinate the professional/technical expertise required for the assigned profession across the five multi-disciplinary teams, working with the Integrated Service Managers to ensure the allocation of resources is appropriate to meet the needs and priorities of each area;
- Ensure the provision of necessary professional supervision of staff employed within the profession across the five teams, ensuring (through the Integrated Services Managers) that members of the profession (including the professional lead) are given appropriate development opportunities to fulfil their role and CPD requirements.



A detailed service specification for Integrated Locality Teams for Children & Young People has been agreed and information from the needs profile has been broken down into each of the four geographical areas so that each team can identify priorities for action and monitor improvement in outcomes for children and young people.

## Priority 14 CYPP Delivery Plan

Lead: Director Services to Children & Young People  
Strategic Partnership: Every Child Matters Task Group  
Resources:

### **Integrated Service for Disabled Children**

The priority for the Integrated Service for Disabled Children will be the provision of short-term breaks for disabled children and young people in line with Aiming High for Disabled Children by:

- Consulting with disabled children and young people their parents and carers and relevant stakeholders to determine need;
- Developing a service commissioning strategy in line with the requirements of Aiming High;
- Developing and Commissioning short break provision in line with this strategy;
- Establishing baseline data on existing numbers of disabled children and the services they are currently receiving;
- Establishing a Participation Strategy that is specific to the needs of disabled children, young people and their parents and carers and using this as a base from which to measure how effective participation is.

## Priority 13 CYPP Delivery Plan

Lead: Director Children & Families  
Strategic Partnership: Disabled Children's Partnership Board  
Resources:

### **Repeat onion diagram and make integrated process stand out**

### **Integrated processes through the Common Assessment Framework,**

#### **Local Preventative Groups and Contact Point**

The aim of the Common Assessment Framework is to:

- Provide earlier intervention;
- Improve joint working and communication through a common language;
- Improve co-ordination and consistency between assessments;
- Inform specialist assessments;
- Develop a holistic picture of the child shared with consent;
- Provide better, more evidence-based referrals.

The common assessment has been implemented since 2005. There has been a steady increase in common assessments rising from 120 in 2005/06 to over 300 children and young people benefiting from a multi agency approach in

2007/08. Over 1,000 members of staff across agencies have been trained in the common assessment and information sharing including Contact Point.

Swindon has adopted a successful model of developing a joint plan and allocation of a lead professional through Local Preventative Groups (LPG). LPGs bring together staff from a range of local agencies including the voluntary sector and schools with the family and young person. The meeting builds on the strengths identified in the common assessment to develop joint solutions. 98% of parents score the process as positive and helping them address the needs of their child. LPGs run weekly in all four multi agency team areas. Each meeting is facilitated by a trained Chair. The Disabled Children's Service has now implemented the LPG model where a child with complex needs requires a joint plan. An annual evaluation of LPGs has demonstrated improvements in outcomes.

LPGs have been effective in facilitating a cultural shift, so that workers come together with the family to identify strengths, a common purpose and language to arrive at solutions outside traditional service boundaries. LPGs have been the first phase in the establishment of virtual multi agency teams and form the basis of joint working.

#### **Implementation of Contact Point**

Implementation of Contact Point is well ahead and was judged 11<sup>th</sup> nationally in January 2007. Local data has been matched successfully giving Swindon one of the highest rates nationally. Good project management, a project board and project plans are in place. Data from Swindon Primary Care Trust Child Health system, local authority education, social care and Connexions data has already been brought together. This means the whereabouts of young people can be established effectively due to the matched data sources. The way staff will access Contact Point has been agreed and an audit of workforce is currently being refreshed. Swindon is due to have first deployment slot for Contact Point in South West in March 2009.

#### **Priority 14 CYPP Delivery Plan**

Lead: Director Strategy & Commissioning

Strategic Partnership: Every Child Matters Task Group

Resources:

#### **Repeat onion diagram and make integrated strategy stand out**

#### **Integrated strategy through Joint Commissioning Arrangements, Workforce Strategy, school place planning and school building**

#### **Joint Commissioning Arrangements**

Joint Commissioning arrangements are well advanced, led by the Children's Joint Commissioning Board. Swindon Primary Care Trust and Swindon Borough Council have entered into a National Health Service Act 2006 Section 75 Agreement for the commissioning of services with the local authority as a fund holder. The Board leads strategic commissioning and monitors the development and implementation of the Children & Young

People's Plan, Local Area Agreement and all National Health Service Act 2006 Section 75 Agreements. A joint commissioning team has been established across Children Services and Swindon Primary Care Trust leading operational commissioning of services, specific strategies including:

- Children's centres and extended services
- Preventative and early intervention services for parenting, family support and services for young people
- Teenage pregnancy services
- Substance misuse services
- Healthy schools
- Community based health services including Child & Adolescent Mental Health Services
- Services for disabled children and those with complex needs
- Integrated locality services for children & young people and care packages
- Parent Support Advisers
- Targeted Mental Health in schools

The commissioning of individual placements remains with managers in Children's Social Care and the commissioning of sexual health services with Public Health. Both service areas participate in joint commissioning team meetings. The following priorities for joint commissioning have been identified to be completed in 2009:

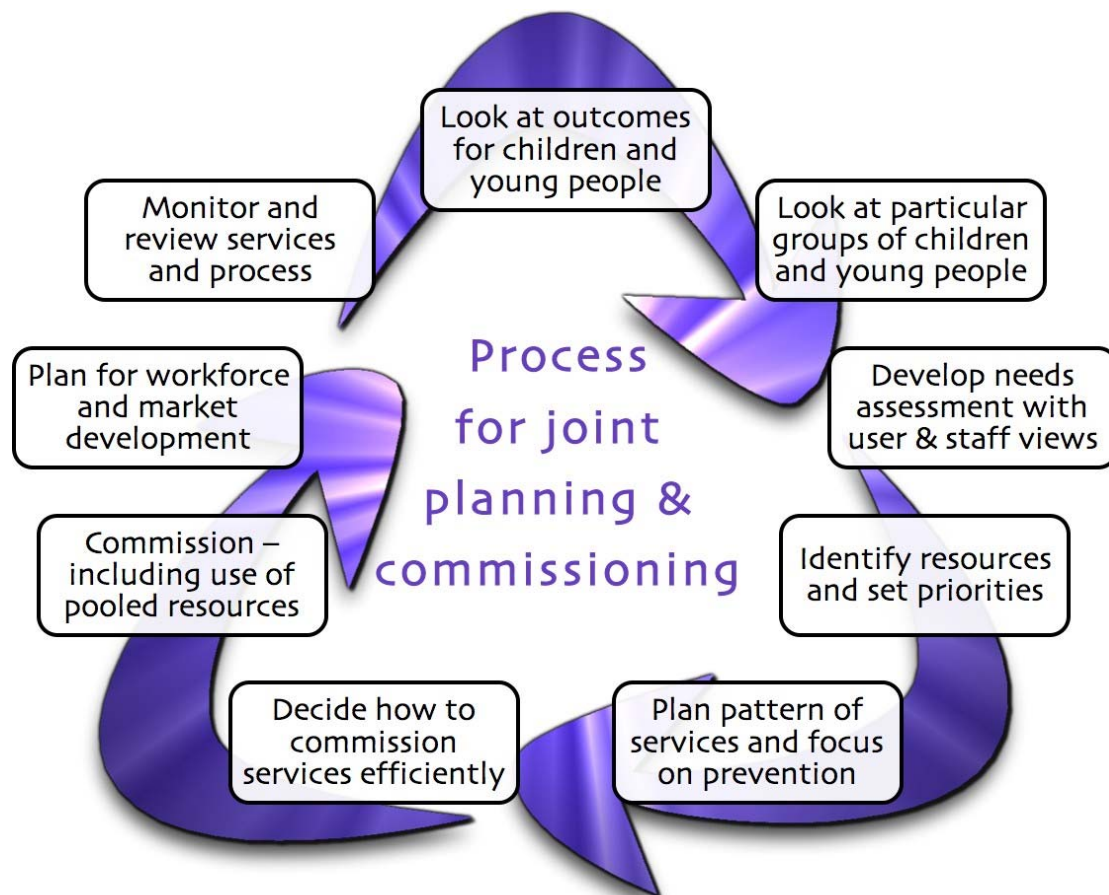
- Preventative and early intervention services for parenting, family support and services for young people from the voluntary sector based on the Parenting & Family Support Strategy;
- Commissioning of maternity services in line with Maternity Matters;
- Child & Adolescent Mental Health Services.

The following Commissioning Framework has been agreed as well as standards for commissioning. Commissioning decisions are delegated to Joint Commissioning groups with exception reporting of performance to the Children's Joint Commissioning Board.

### **Definition**

"Commissioning is the process of specifying, securing and monitoring services to meet people's needs at a strategic level. This applies to all services, whether they are provided by the local authority, NHS, other public services or by the private or voluntary sector."

(Audit Commission, Making Ends Meet, October 2003)



## Priority 14 CYPP Delivery Plan

Lead: Director Strategy & Commissioning  
Strategic Partnership: Performance Review Group  
Resources:

### Workforce development

Developing a highly skilled and motivated workforce is our priority in raising aspirations of all children. A multi agency Children's Workforce Strategy is in place covering recruitment and retention initiatives and the development of multi agency training programmes based on common core skills. The Children Services Directorate has liP status. The Children's Workforce Group has been established driving the implementation of the strategy. Multi agency training is in place with emphasis on safeguarding, substance misuse, sex and relationship education, information sharing and the common assessment and equalities. A voluntary sector training programme is in place and this has increased skills in evaluating services across the sector.

Developing leadership and management competencies has been good, with the implementation of management workshops and seminars. The Virtual Staff College is delivering the first multi agency management programme based on Champions Children in Swindon, bringing together managers from



the local authority, health and the voluntary sector. The following priorities have been identified:

- Continue to develop leadership and management across Integrated Locality Teams for Children & Young People and the Integrated Service for Disabled Children & Young People and the voluntary sector for up to 16 managers each year;
- By March 2009 all interview panels for posts in the children's trust will have a member trained in safer recruitment (Local Safeguarding Children Board target)
- Develop a culturally competent workforce, meeting the needs of a diverse and growing community through training and learning from best practice reaching 100 members of staff each year;
- Continue to implement a change management programme for all staff in ensuring competency in common core skills and maintaining professional expertise and standards;
- Good recruitment and retention programmes with staff providing highly personalised support.

#### Priority 14 CYPP Delivery Plan

Lead: Director Access & Provision/ Director Human Resources

Strategic Partnership: Every Child Matters Task Group

Resources:

#### **Parenting and Family Support Strategy**

The Parenting and Family Support Strategy was agreed by the Children's Joint Commissioning Board and Cabinet in April 2008. The aim of the Strategy is

- A consistent approach to supporting parents through universal, targeted and specialist services;
- Identification of four levels of need, with a menu of support;
- Some work strands impact on more than one level and families may access a range of services across different levels and may need differing levels of support at different times;
- A seamless system of support.

The following priorities have been identified for 2011:

- Commissioning of Parent Support Advisers providing support to children with additional needs through clusters of schools;
- Evidence based parenting support programmes for parents with children aged 5 – 13 year of age delivered by 50 trained staff;
- Support to all teenage parents based on agreed care pathways through midwifery, children's centres and Targeted Youth Support;
- Parenting programmes to target managing behaviour, sex and relationship education and substance misuse education delivered to 100 parents each year.



### **School Place Planning and School Building Programme**

Between 2000/01 and 2005/06, five new primary schools were constructed and there have been a number of major refurbishments undertaken at both primary and secondary schools in Swindon.

Swindon 2010 Promise17 relates to the removal/replacement of unsuitable mobile accommodation on school sites. A significant amount of capital funding is being targeted at this Promise, including £4m for the replacement of mobiles at a secondary school in Wroughton, to the South of the town.

Swindon 2010 Promise 28 is for the construction of seven new PFI-funded schools. This £90m contract has now been completed with the opening of two special, two secondary and three primary schools. The Local Authority has a 25-year contract with the PFI provider to manage and operate the seven schools. The priorities for 2010 are:

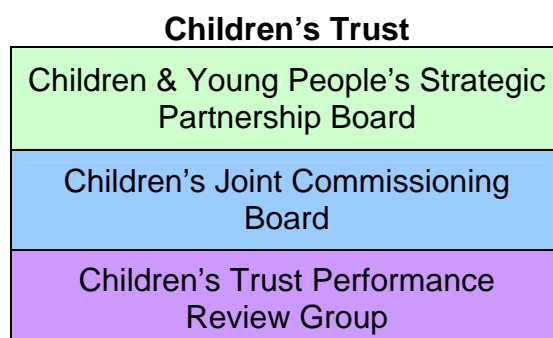
- The completion of a £106m, four-year Children Services Capital Programme targeted at major school rebuilding/improvement programmes including the rebuilding of four primary schools and the construction of two additional primary schools in growth areas in the North and South of the urban area;
- Swindon has also been selected by the DCSF as one of 23 Pathfinder Authorities for the Primary Capital Programme and has been allocated £6.5m capital funding for 2008/09.

### **Repeat onion and make integrated governance stand out**

#### **Integrated governance through Children's Trust arrangements and joint planning and development of services**

Clear decision-making arrangements, terms of reference and a memorandum of understanding are in place for the Children's Trust. The Children's Trust arrangements are built on strong partnerships, where partners respect each other and share a joint vision and shared priorities, outlined in the Children & Young People's Plan and Local Area Agreement.

The Children's Trust within Swindon has three elements:



## **Children & Young People's Strategic Partnership Board:**

The Children & Young People's Strategic Partnership Board will be refocused to lead the Children's Trust in Swindon, taking account of the new draft statutory guidance to deliver a step change in improving outcomes for children and young people. The purpose of the Board will be to:

- Improve outcomes for children, young people and families through the development and implementation of the Children & Young People's Plan and the Local Area Agreement based on the National Indicator Set and Vital Signs and on a thorough analysis of need and the performance of services;
- Develop commissioning strategies and plans to improve outcomes for all children and young people and ensure the contribution of all agencies to achieving agreed outcomes;
- To charge the Children's Joint Commissioning Board (CJCB) in developing commissioning activities around a range of 'service/delivery gaps' where applicable;
- To endorse key early interventions and practices/processes, such as the Common Assessment Process (CAF), Lead Professional, Contact Point and Parenting Strategy, in order to deliver services to children and young people within our communities by all partners;
- Give policy advice to the Council in relation to Children's Services and to be accountable to Swindon Local Area Agreement Partnership Board on behalf of all partners;
- To ensure that appropriate challenge is embedded within the C&YPSPB concerning (by exception), the performance of high level targets and indicators, such as the C&YP Plan and the LAA priorities;
- To charge the Children's Trust Performance Review Group to provide a more detailed focus of the performance of a range of service areas, with any areas of continual and/or potential high level concern needing to be referred to the C&YPSPB;
- To endorse and embed a Children's Workforce Strategy that relates to all partners and service areas;
- Ensure participation by children, young people, parents and carers to improve services and inform priorities;
- Receive reports from the Local Safeguarding Children Board (LSCB);
- The Children & Young People's Partnership Board will also be informed by a number of stakeholder groups of children and young people (Youth Forum), parents and carers and the Children and Young People's Strategic Partnership, which will continue to run partnership meetings three times a year. The meetings of the Children and Young People's Strategic Partnership will be open to all agencies with an interest in Children's Services. The purpose of the partnership meetings will be to disseminate information, identify local issues and share good practice.

## **Children's Trust Joint Commissioning Board**

- The Children's Trust Joint Commissioning Board (CTJCB) is responsible for the delivery of the National Health Services Act 2006 Section 75 Agreements and the implementation of commissioning strategies to improve outcomes for children and young people;
- The Board brings together elected Members and executive and non-executive members of Swindon Primary Care Trust, the voluntary sector and Wiltshire Constabulary;
- The development of pooled budgets will be taken forward by the Children's Joint Commissioning Board.

The Children's Joint Commissioning Board will be supporting the Children & Young People's Partnership Board in the development of appropriate joint commissioning activities, which support the drive towards a more integrated children's service, with early intervention seen as a key driver for change.

## **Children's Trust Performance Review Group**

The purpose of the group is to provide a monthly focus by senior managers for the performance management of joint commissioning arrangements and National Health Services Act 2006 Section 75 Agreements, delivery of the Local Area Agreement and Children & Young People's Plan for children aged 0 – 19 in Swindon.

The children's trust arrangements are supported by a number of working groups, which are responsible for the delivery of parts of the Children & Young People's Plan. All planning and joint commissioning are co-ordinated by the Children's Trust Performance Review Group:

- Every Child Matters Task Group co-ordinating the development of policies and strategies and implementation of integrated services, integrated processes, participation and the National Service Framework for Children, Young People and Maternity Services;
- Joint Commissioning of Specialist Services through the Disabled Children & Young People's Partnership Board, Child and Adolescent Mental Health Services, Substance Misuse Services, and Out of Borough Placements;
- Specific strategy groups, such as the 14 – 19 Strategy Group, Teenage Pregnancy Strategy Board

## **Local Safeguarding Children Board**

The Local Safeguarding Children Board is independent of the Children & Young People's Partnership Board and will take reports on policy and practice issues to the Board or to Swindon Borough Council. The role of the Local Safeguarding Children Board is to:

- Co-ordinate local work to safeguard and promote the welfare of children
- Ensure the effectiveness of local services

- Holds everyone working with children, young people and families to account for safeguarding and scrutinises the work of the Director of Children Services and lead member for Children.

Safeguarding children is everyone's business and all the partners across the different agencies in Swindon, work together to ensure that the LSCB provide the best possible integrated service supporting children and families. The core duty is to co-ordinate, promote and ensure effect safeguarding of all children in Swindon.

The Swindon LSCB Annual Report and Business Plan reviews progress against the objectives of the previous year, provide relevant management information on child protection and safeguarding activity in the course of the previous year and set out an outcome based and timely work programme for the coming year. This is disseminated widely through the local community as one way of publicising the work of local agencies to safeguard children and promote the welfare of children within Swindon.

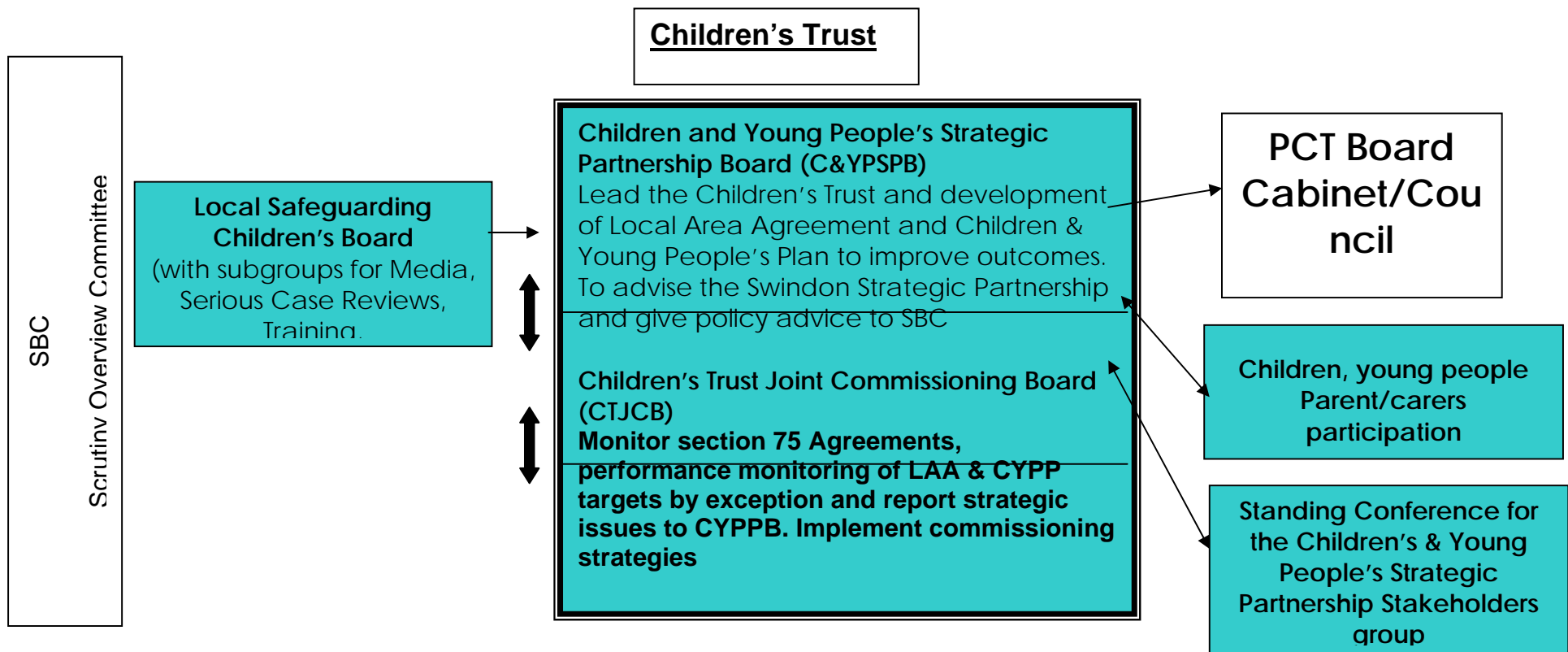


Diagram 1 represents the relationship between the different bodies. The Children and Young People's plan expands on the inter-action between the management and governance arrangements and the operational groups in Part 2 of the plan.

## **Performance Management**

The Group Director, Children is responsible for ensuring that children's needs are identified and addressed so that outcomes for all children and young people improve. Swindon Borough Council is the children's services authority and accountable body. Inspectors judge the Council's performance in assessing whether services have improved outcomes for children and young people improve. Each of the Children's Trust partners are responsible for achieving targets for improvements, delivering high quality services and developing new services with children, young people, parents and carers.

The Community Strategy 2008 – 2030 sets the vision and context for Swindon including the Local Area Agreement. The priorities for children and young people in the Local Area Agreement are then reflected in the Children & Young People's Plan and all relevant priorities, targets and actions are included in the Strategic Management Plan of each of the Children's Trust Partners. These in turn are included in individual teams business plans. Key objectives for each individual member of staff reflect how they contribute to the team business plan and in turn to the Strategic Management Plan and therefore the Children & Young People's Plan.

Outcomes and priorities are set annually from the annual needs assessment, gathering information from children, young people, parents and stakeholders and analysing our performance, outcomes and priorities are set annually.

Outcomes are measured through targets and milestones. Progress against targets and milestones is monitored monthly by the Children's Trust Performance Review Group and all indicators which are red or amber for 2+ reporting periods are reported by the responsible director to the Children's Joint Commissioning Board. This robust process has resulted in targeted action on young people not in education, training or employment leading to a 2% reduction in 2007/08. In 2007/08 fifteen champions were trained in the Outcome Based Accountability Framework to take this approach to improved performance management into service areas. The commissioning of family and parenting support has already benefited from this approach so that all service specifications show '*how well services are doing*' and '*what difference has been made*'.

Priorities and progress on targets falling within the Local Area Agreement are reported to the Local Area Agreement Partnership Board by the Group Director Children.

Insert file of golden thread

## **Local Information on the needs of children and young people**

Swindon has undertaken a detailed needs analysis of its population in 2007 and 2008 available on [www.swindon.gov.uk/cypsp/children\\_youngpeoples\\_plan](http://www.swindon.gov.uk/cypsp/children_youngpeoples_plan)

**AN ASSESSMENT OF THE NEEDS OF CHILDREN  
AND YOUNG PEOPLE LIVING IN SWINDON  
– UPDATE DECEMBER 2007**

This document updates the Needs Assessment completed in March 2007 in preparation for the co-location of multi-agency integrated teams in Swindon.

The document shows those areas where data has shown significant change, or where new data has become available. Please read alongside the main Needs Assessment on [www.swindonlaa.org.uk](http://www.swindonlaa.org.uk)

- The total Swindon school population has risen only very slightly between January 2007 and October 2007, but the BME population has increased from 13.9 to 15.1% in primary schools and from 11% to 11.9% in the secondary schools.
- In the South area of Swindon the BME primary school population has increased from 13.9% to 15.6% and the secondary school population in Central North area has increased from 4.2% to 7.7%. In the North area of Swindon the secondary school population has increased from 5.3% to 7.1%.
- The percentage of children who do not speak English as their first language has risen from 6.6% to 8.6% of the school population. Over half of these children live in the Central South area.
- Students attaining 5 or more GCSEs at grade A\* to C has risen to 54.3%, an increase of 0.8%. However, the national figure rose 2.8% to 62%.
- Children and Young people with an ethnic minority background underachieve at each key stage except GCSE. Each ethnic group of pupils have small numbers at each key stage making comparisons difficult.
- 74% of Common Assessments completed and 72% of Local Preventative Groups held in the past six months have been for boys.
- Authorised absence has improved in Swindon Schools from 7.8% to 5.8%. Unauthorised absence in secondary schools has risen from 0.7% to 1.3%. Primary school authorised absence improved from 5.3% to 4.6% and unauthorised remained the same.
- School absence is higher than average for pupils of Dual Heritage in Secondary Schools, 8.1% compared to an average of 7.2%. Primary school absence is high for Asian pupils, 6.6%, and Dual Heritage pupils, 5.3% compared to an average of 4.9%.

- Fixed term exclusions have dropped in both primary and secondary schools. The average length of a fixed term exclusion has increased.
- Pupils with a mixed heritage are over represented among the fixed term exclusions in primary schools. Black and dual heritage pupils are over represented at secondary level. 93% of pupils subject to fixed term exclusions at primary level are male. At secondary level 71% are male.
- Open cases to the Youth Offending Team include 15% of young people with a BME background. 76% are male.
- Referrals to Children and Families have dropped from 55 per 1,000 of population to 38 per 1,000 during the year 31.10.06 to 31.10.08.
- 10% of referrals to Children and Families are for BME children and young people. Referrals for Black children and young people have dropped from 8% to 2% and for Asian children and young people referrals have dropped slightly. Referrals for children and young people with a dual heritage have risen from 1.5% to 3.9%.
- Referrals to Children and Families with a BME background have risen in Central South from 7.4% to 13.6% of the total referrals for that area. Referrals also rose in North and South area. In Central North there was a drop from 6.2% to 4.7% of the total referrals for that area.
- Young people aged 16 to 18 who are not in education, employment or training reduced from 8.5% to 6.8% across Swindon. There was a reduction in each of the four areas.
- The percentage of BME children looked after dropped from 13.8% to 11.5%. A child with a BME background is still however 2.3 times more likely to become a looked after compared to almost 3 times in October 2006.
- There has been a rise of 31 children and young people on the Child Protection Register. The highest increase was in Central South area, where numbers increased from 30 to 55.
- There was a significant rise in the number of children and young people registered with the category of emotional abuse, from 12.5% to 33.9%. Registrations with the category of Neglect rose from 31% to 43%.
- Permanent exclusions rose slightly from 0.9 per 1,000 population to 1.1 per 1,000. 82% were male and 20% were young people with a BME background.



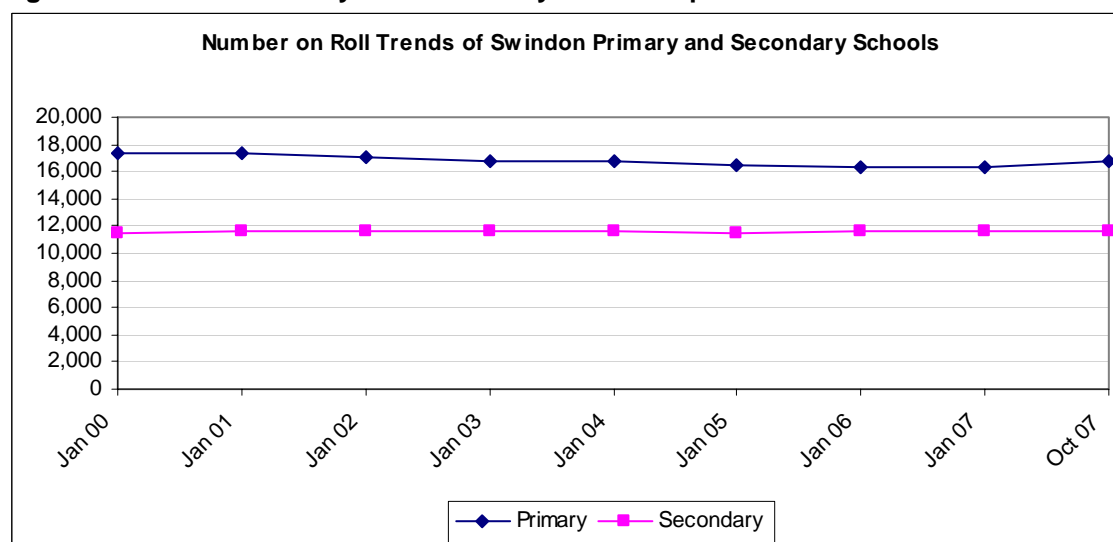
## School Population

**Figure 1.1: Primary and Secondary School Population 2000-2007**

	Jan-00	Jan-01	Jan-02	Jan-03	Jan-04	Jan-05	Jan-06	Jan-07	Oct-07
Primary	17,299	17,286	17,025	16,776	16,701	16,422	16,339	16,266	<b>16,805</b>
Secondary	11,465	11,561	11,563	11,588	11,584	11,477	11,627	11,556	<b>11,567</b>

*This includes pupils attending schools outside of the four areas*

**Figure 1.2: Chart of Primary and Secondary School Population 2000-2007**



Overall numbers of pupils attending all Swindon schools has risen very slightly in the period January to October 2007<sup>1</sup>.

In September 2007, a new secondary school Isambard Community School opened in the **North** area. In the **Central North** area Headlands Secondary School, Pinehurst Infant and Pinehurst Junior schools closed in July 2007 and the Swindon Academy opened in September 2007. From September 2007 Hreod Parkway Secondary School moved to new premises and became Nova Hreod.

## Swindon BME Population

**Figure 1.13: Swindon Ethnic Population**

		Asian	Black	Chinese	Mixed	Not known	Other	White British	White Other	Total Ethnic Oct 07	Total Ethnic Jan 07
Primary	Central North	2.5%	1.0%	0.2%	3.2%	4.3%	0.9%	85.4%	2.5%	<b>10.3%</b>	<b>9.6%</b>
	Central South	13.3%	2.0%	0.5%	3.4%	1.7%	1.1%	74.9%	3.2%	<b>23.4%</b>	<b>22.3%</b>
	North	2.8%	0.9%	0.2%	3.1%	1.3%	1.0%	88.6%	2.1%	<b>10.1%</b>	<b>9.1%</b>

<sup>1</sup> Assessment of the Needs of Children and Young People Living in Swindon May 2007 page 15

	South	5.4%	1.4%	0.4%	3.7%	0.5%	1.3%	83.9%	3.5%	15.6%	13.9%
<b>Primary Total</b>		<b>6.1%</b>	<b>1.3%</b>	<b>0.3%</b>	<b>3.3%</b>	<b>1.7%</b>	<b>1.1%</b>	<b>83.3%</b>	<b>2.9%</b>	<b>15.1%</b>	<b>13.9%</b>
Secondary	Central North	2.4%	0.6%	0.0%	2.1%	2.0%	0.5%	90.3%	2.0%	7.7%	4.2%
	Central South	11.8%	1.9%	0.3%	2.2%	2.0%	1.1%	77.8%	2.9%	20.1%	19.8%
	North	2.3%	0.6%	0.2%	2.0%	2.1%	0.5%	90.8%	1.4%	7.1%	5.3%
	South	3.6%	1.4%	0.4%	2.5%	2.9%	0.5%	85.7%	2.9%	11.3%	10.3%
<b>Secondary Total</b>		<b>5.2%</b>	<b>1.2%</b>	<b>0.3%</b>	<b>2.3%</b>	<b>2.3%</b>	<b>0.6%</b>	<b>85.8%</b>	<b>2.3%</b>	<b>11.9%</b>	<b>11.0%</b>
<b>All Pupils Total Oct 07</b>		<b>5.7%</b>	<b>1.3%</b>	<b>0.3%</b>	<b>2.9%</b>	<b>2.0%</b>	<b>0.9%</b>	<b>84.3%</b>	<b>2.6%</b>	<b>13.8%</b>	
<b>All Pupils Jan 07</b>		<b>5.2%</b>	<b>1.1%</b>	<b>0.3%</b>	<b>2.6%</b>	<b>2.1%</b>	<b>0.9%</b>	<b>85.4%</b>	<b>2.45%</b>		<b>12.5%</b>

Source: School Census. Data is as at Oct 07.

During 2007, the Swindon School Census showed a rise in the percentage of the school population who are from an ethnic background other than White British from 12.5% to 13.8%<sup>2</sup>. This rise was higher in the primary schools (13.9% to 15.1%) than in the secondary schools (11% to 11.9%). The largest ethnic group continues to be those from an Asian background followed by pupils from a dual heritage background.

The biggest increase of primary aged children from an ethnic minority background during 2007 has been in the **South** area, rising from 13.9% to 15.6%.

The percentage of secondary school population who are from an ethnic minority has risen from 4.2% to 7.7% in the **Central North** area and from 5.4% to 7.1% in the **North** area.

**Central South** has the highest numbers of pupils from ethnic minorities with 23.4% of Primary age pupils and 20.1% of secondary age pupils being from an ethnic minority. Asian pupils are particularly concentrated in this area.

### **Deprivation Profile**

ACORN is an analytical tool providing detailed local information by postcode. The tool combines demographics and lifestyle information. ACORN categorises the population into 5 categories:

<sup>2</sup> Assessment of the Needs of Children and Young People Living in Swindon May 2007 page 18

<b>Wealthy Achievers</b>	Wealthy Executives, Affluent Greys, Flourishing Families.
<b>Urban Prosperity</b>	Prosperous Professionals, Educated Urbanites, Aspiring Singles.
<b>Comfortably Off</b>	Starting out, Secure Families, Settled Suburbia, Prudent Pensioners.
<b>Moderate Means</b>	Asian Communities, Post-industrial Families, Blue Collar Roots.
<b>Hard Pressed</b>	Struggling Families, Burdened Singles, High-Rise Hardship, Inner City Adversity.

**Figure 1.15: Deprivation Profile**

<b>Region</b>	<b>Wealthy Achievers</b>	<b>Urban Prosperity</b>	<b>Comfortably Off</b>	<b>Moderate Means</b>	<b>Hard Pressed</b>
<b>Great Britain</b>	24.9%	11.7%	27.7%	13.9%	21%
<b>Swindon</b>	21.8%	3.5%	40.0%	15.4%	18.5%

**Source: ACORN May 07**

24.9% of the population of Great Britain are Wealthy Achievers. 11.7% fall within the Urban Prosperity group and 27.7% of the population are Comfortably Off. 13.9% are within the Moderate Means group and 21% of the Great Britain population are Hard-Pressed.

65% of Swindon's population are Comfortably Off or better and this is in line with the national picture. However, Swindon has a lower percentage than the national average of Wealthy Achievers and a significantly lower percentage within the Urban Prosperity band. Conversely, 40% of Swindon's population are in the Comfortably Off band, significantly higher than the average for Great Britain (13%).

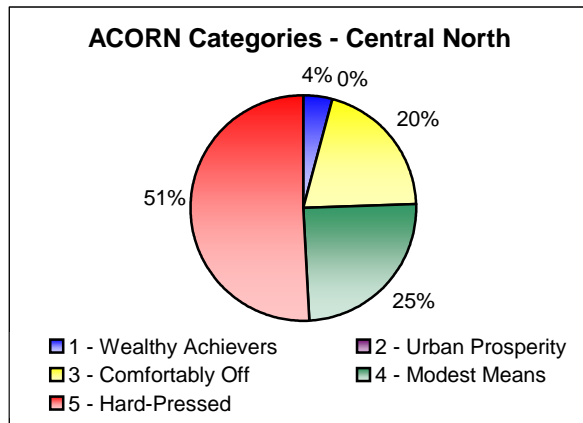
A further 15% of Swindon population are within the Moderate Means group, higher than the national average. 18.5% of the Swindon Population is Hard Pressed, and this is lower than the national average.

Within the four areas of Swindon, the ACORN profile varies greatly. Similar to the 2004 Indices of Deprivation<sup>3</sup>, the wards of Penhill, Walcot, Parks Gorsehill and Pinehurst and Moredon are the most deprived areas of Swindon.

<sup>3</sup> Assessment of the Needs of Children and Young People Living in Swindon May 2007 Page 32

51% of the **Central North** area population are Hard Pressed and a further 25% are of Moderate Means. Less than 25% are Comfortably Off or better.

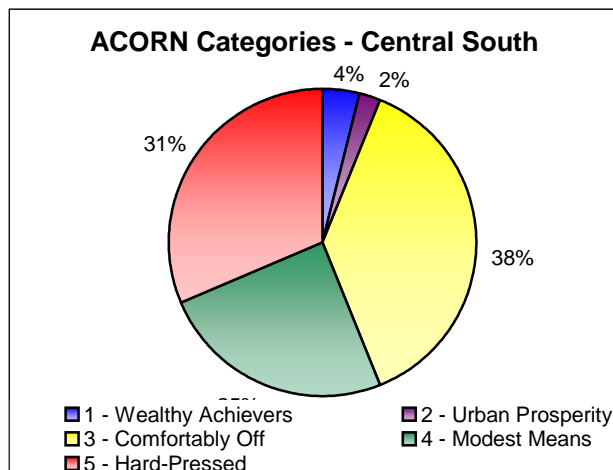
Figure 1.16: Acorn Categories – Central North



Source: ACORN May 07

The **Central South** area population is made up of 31% Hard-Pressed and 25% of Modest Means. 44% are Comfortably Off or better.

Figure 1.17: Acorn Categories – Central South

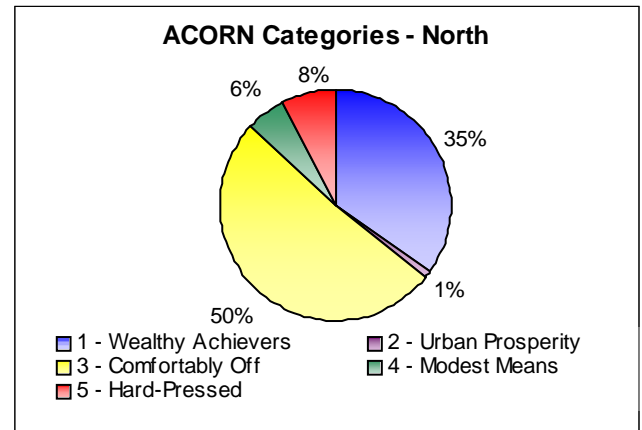


Source: ACORN May 07

86% of the **North** area population are Comfortably Off or better.

Only 8% are Hard Pressed.

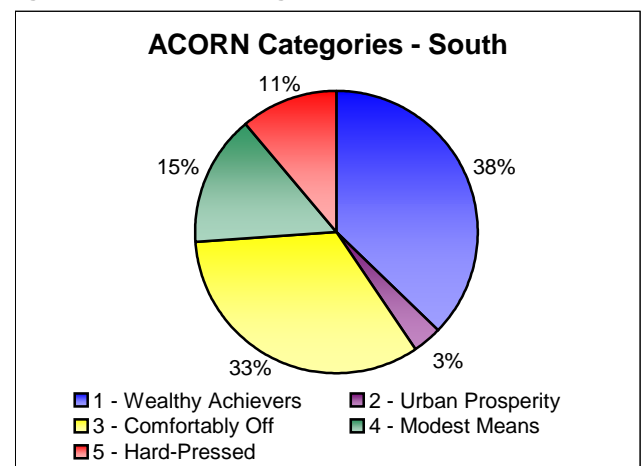
Figure 1.18: Acorn Categories –North



Source: ACORN May 07

75% of the population in the **South** area are Comfortably Off or better. 11% are Hard Pressed.

Figure 1.19: Acorn Categories – South



Source: ACORN May 07



## **Contact details**

**The main contact for the Children's Joint Commissioning Board, the Children and Young People's Partnership Board, the Children's Trust Performance Group and the Children & Young People's Strategic Partnership is:**

**Sue Wald  
Director Strategy & Commissioning  
Group Directorate Children  
Swindon Borough Council  
Sanford House  
Swindon SN11QH**

**[swald@swindon.gov.uk](mailto:swald@swindon.gov.uk)**

## **Children & Young People's Strategic Partnership Board:**

### **Proposed main purpose**

- Developing strategies and plans to improve outcomes for all children and young people and ensure the contribution of all agencies to achieving agreed outcomes;
- Driving improvement in performance of services by establishing clear priorities for action;
- Developing, reviewing and amend the Children & Young People's Plan taking account of changing needs, progress with priorities, new priorities and opportunities
- Policy advice to the Council in relation to Children's Services;
- Participation by children, young people, parents and carers to improve services and inform priorities;
- A monitoring role and oversight of the Local Safeguarding Children Board (LSCB).

### **Proposed membership organisations of the Children's Trust Partnership Board**

- Independent Chair of the Board
- Swindon Borough Council
- Swindon Primary Care Trust
- Wiltshire Constabulary
- The Learning & Skills Council
- Secondary Schools
- Primary Schools
- Special Schools
- Voluntary Sector
- Swindon & Marlborough NHS Trust
- Parents and Governors

- Equalities representative

## **The Children's Joint Commissioning Board**

### **Main Purpose**

- A key role in developing and implementing commissioning strategies and arrangements of Children's Services across Swindon to improve outcomes;
- A monitoring role for the National Health Services Act 2006 Section 75 Agreements, Local Area Agreement and the Children and Young People's Plan.

### **Membership**

- Director of Children's Services;
- 3 nominated representative of Swindon Primary Care Trust including the Chief Executive and Director of Finance and non Executive Children's Champion of Swindon Primary Care Trust;
- Commander of Wiltshire Constabulary;
- Chief Executive of the Learning & Skills Council;
- Director Wiltshire & Swindon Community Foundation
- Three elected Members from Swindon Borough Council.

### **Children's Trust Performance Group**

The purpose of the group is to provide a focus for the joint commissioning, performance review of Section 75 Agreements and delivery of the Local Area Agreement and Children & Young People's Plan for children aged 0 – 19 in Swindon. This will include development of policy and strategies to be presented to the Children's Services Partnership Board and the Children's Trust Executive Management Group.

### **Membership of the Children's Trust Performance Group**

- Director of Commissioning PCT
- Assistant Director: Children's Commissioning PCT
- Deputy Director Public Health
- Head of Finance, Children's Services SBC
- Deputy Director of Finance PCT
- Director Children & Families
- Director of Strategy & Commissioning (Children)
- Director Services to Children and Young People
- Swindon & Marlborough NHS Trust
- Learning & Skills Council
- Wiltshire Constabulary
- Director Community/Community Safety
- Director Housing
- Integrated Service Managers

- Two Voluntary sector representatives

## **Local Safeguarding Children Board**

### **Purpose:**

- Co-ordinate local work to safeguard and promote the welfare of children
- Ensure the effectiveness of local services
- Holds everyone working with children, young people and families to account for safeguarding and scrutinises the work of the Director of Children Services and lead member for Children.

### **Membership**

Representation on Swindon LSCB has been agreed as follows:

- Group Director, Children, Swindon Borough Council (Chair of the Board)
- Senior Police Officer, Swindon
- CEO Delegated Representative, Swindon PCT
- Designated Doctor
- Designated Nurse
- GP Representative
- Strategic Health Authority Representative
- Swindon & Marlborough NHS Trust Representative
- Avon & Wiltshire Mental Health Partnership NHS Trust Representative
- Great Western Ambulance Service NHS Trust Representative
- Director of Children & Families, Swindon Borough Council
- Head of Safeguarding, Swindon Borough Council
- Services to Children & Young People, Swindon Borough Council Representative
- CEO, Connexions
- Area Service Manager, CAFCASS
- Area Service Manager, NSPCC
- Probation Service Representative
- Head of Youth Offending Team (YOT)
- Housing Representative
- Early Years Representative
- Primary School Head Teacher
- Secondary School Head Teacher
- College Representative
- Special Schools Representative
- Youth Service Representative



- Community Safety Partnership (Drugs) Representative
- DV Co-ordinator
- Pharmacy Representative
- Dental Practitioners' Representative
- Opticians' Representative
- Voluntary Sector Representative
- Leisure Services Representative
- The chair of any LSCB sub-group not included above

In addition to the above, Swindon LSCB takes action to establish links with:

- The Children's Trust Board
- The PCT Board
- Adult Services
- Local Authority legal services
- The Community Safety Partnership (including the Domestic Violence Forum)
- MAPPA
- The Coroner
- The local Family Justice Council
- The local Criminal Justice Board
- The Crown Prosecution Service
- Witness Support Services
- Drugs and Alcohol Services

To enable it to fulfil its responsibilities, Swindon LSCB has established a Management Group and the following Sub-groups:

- Serious Case Review Sub-group
- Procedures Sub-group
- Quality Assurance Sub-group
- Training Sub-group
- Media Sub-group
- E-safety Sub-Group

Each of these groups has defined its membership and terms of reference.

## Glossary

<b>Terms used in this document</b>	<b>Means</b>
Behaviour Improvement Programme	Programme funded by DCSF operating in Swindon Academy and Hreod Parkway catchment area aimed at improving attendance, promoting social and emotional development of children and young people and raising educational standards.
Contact Point previously Child Index	A new way of linking existing databases in Children's Services, the Primary Care Trust and Connexions so that all trained and qualified practitioners working with children and young people have access to basic details, such as the address, GP and School of each child and the services a child or young person is receiving. Contact Point is likely to be available in 2009
Child and Adolescent Mental Health Service (CAMHS)	Preventative, targeted and specialist services provided by Marlborough House to support children and young people's emotional and social development and prevent and treat mental illness.
Children and Families (Group Directorate Children, Swindon Borough Council)	The work of the Local Authority delivering statutory social work service to children in need, looked after children, And child protection.
Children in need	Children who are unlikely to achieve or maintain a reasonable standard of health and development, or who face significant impairment of their health or development as a result of their needs not being met. This also includes children with disabilities.
Children looked after/children in care	Children and young people who are accommodated by the Local Authority (Children & Families) following a voluntary agreement with their parents and carers and who now live in foster or residential care; children and young people for whom the Local Authority has a court order and the Local Authority in partnership with parents and carers determines where

	the child or young person is living.
Children's centres/local Sure Start Programme	Universal and targeted multi-agency services for 800-1000 children in a local area. There will be 14 children centres in Swindon by 2010. Extended schools
Children's Fund	A programme of preventative services for children aged 5-13 funded by the DCSF until 2008. The Children's Fund operates in Penhill/Pinehurst and Swindon Academy catchment area and Parks/Walcot East and Churchfields catchment area.
Children's Trust	Most areas should have a children's trust by 2006. The Government expects all areas to have a children's trust by 2008. By 2008, local authorities are required to have in place arrangements that produce integrated working at all levels, from planning through to delivery, with a focus on improving outcomes. Local authorities may choose not to call this a 'children's trust', but the important point is that the way of working is in place and committed.
Children's Joint Commissioning Board	A Board set up by Swindon Borough Council and partners leading the children's trust. The Board reports to Cabinet and monitors the Children & Young People's Plan and the joint commissioning of services
Common Assessment	A requirement by the Children Act 2004 that all children who are vulnerable are offered one assessment, which can be shared with other professionals with consent and which will be the basis of a referral to all specialist services. A common assessment will be undertaken if there is reason to think that a child is not making the progress they should be at their age but it is not clear what the underlying causes are or what would help or the child is likely to need the support of another agency.
Connexions	Advice and holistic support to young people aged 13-19 provided by personal advisors in aiming to

	improve the number of young people in education, training and employment.
Services to Children & Young People (Group Directorate Children, Swindon Borough Council)	Children Services within Swindon Borough Council, bringing together youth, play. Connexions, early years, education.
Joint Commissioning	The process of identifying specifying and reviewing services based on identified needs.
Local Area Agreement	A contract between Swindon Borough Council and partners with the government prioritising developments and targets to improve services.
Local Safeguarding Children Board	New legal body which oversees all child protection work in Swindon
National Service Framework for Children, Young People and Maternity Services.	10 year programme with standards for all services provided to children, young people and their families, which must be reached by 2014.
National Health Service Act 2006 Section 75 Agreement	A legal agreement between Swindon Borough Council and Swindon Primary Care Trust to establish a joint aligned fund for services for children and young people. The agreement sets out which services are covered, what outcomes are to be achieved and how much money is in the fund.
Participation by children and young people	Active involvement of children and young people in discussions about their lives and the planning development and evaluation of services.
Parenting Support Advisers	A new professional in Children Services who will be creating a link between school and home so that attendance of children improves, exclusions are prevented and parents receive more help with their children.
Parenting and Family Support Strategy	A written plan which sets out what support all parents and those who have difficulties can expect from the agencies across Swindon
Vulnerable children/ children with additional needs	Vulnerable children face a number of barriers and obstacles preventing them from achieving their full social, emotional, health and educational potential without additional help. Children can experience a number of vulnerability factors. The level of their

	vulnerability will be determined by the combination of those factors and the level of strength within the family and support available to them (resilience).
Targeted Mental Health in Schools	A government pilot delivered in four secondary schools in Swindon and feeder primary schools: Churchfields, Dorcan and Greendown clusters, St Lukes and Nyland. Specialist staff will train staff in schools and Integrated Locality Teams for Children & Young People so that the mental health of children improves.
Youth Offending Teams	Multi agency team working with young offenders and young people at risk of offending including social behaviour. The team is part of Swindon Borough Council Group Directorate: Children.