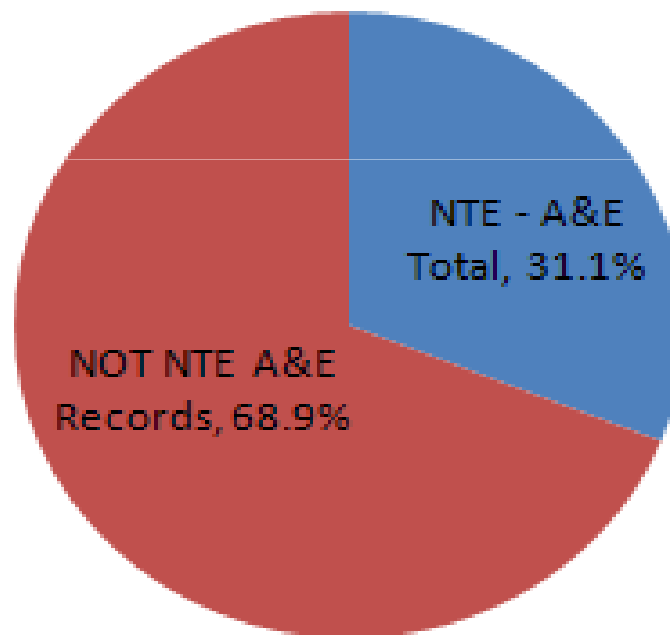


Ambulance and A&E data

Maciej Wojewodka, Operational Policing
(North) Performance Analyst

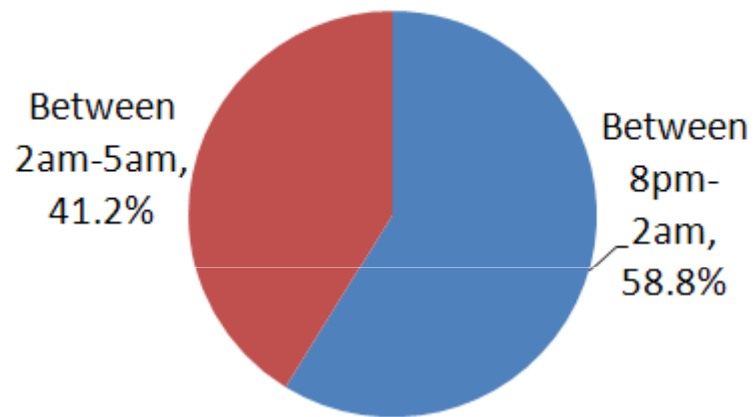
Accident & Emergency

All VAP A&E Records - Last 12 months

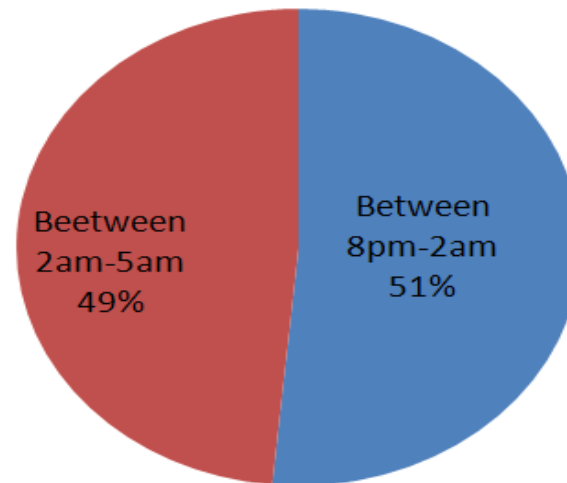


A&E Data Vs Reported Crime

Last 12 Months A&E Records - NTE

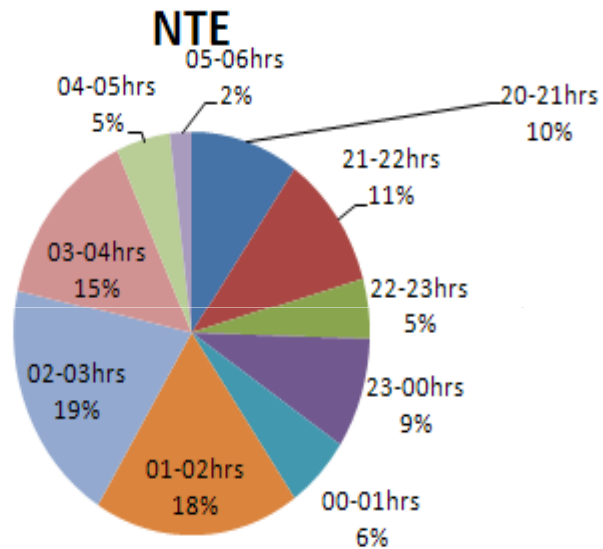


VAP - NTE Last 12 Months

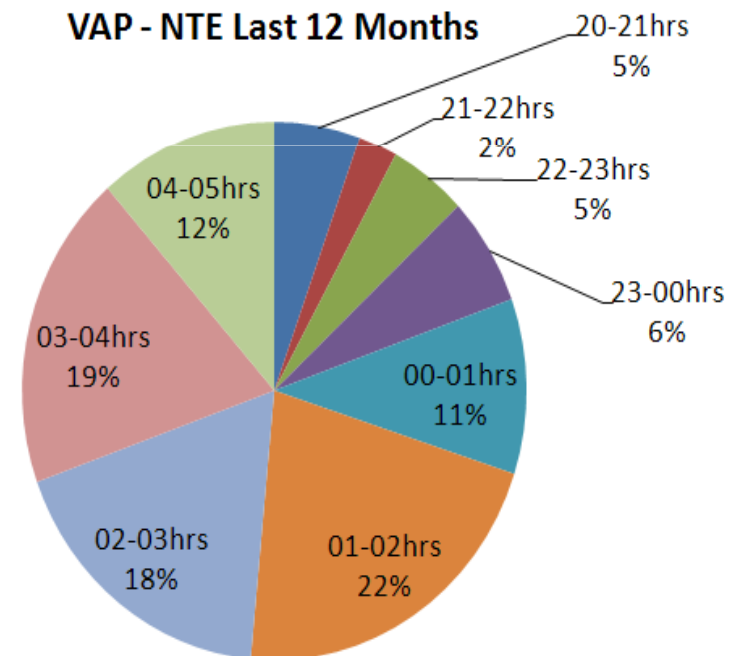


A&E Vs Crime Reported Time

Last 12 months - A&E Report Times -

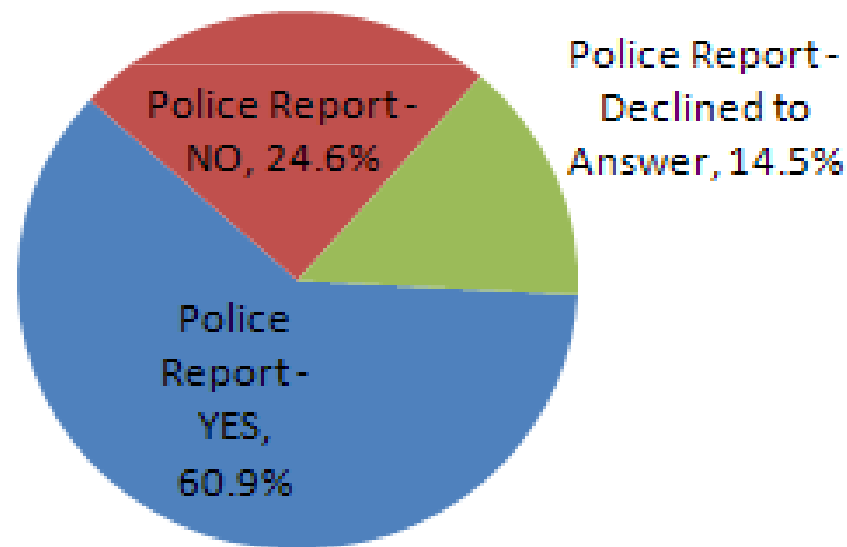


VAP - NTE Last 12 Months

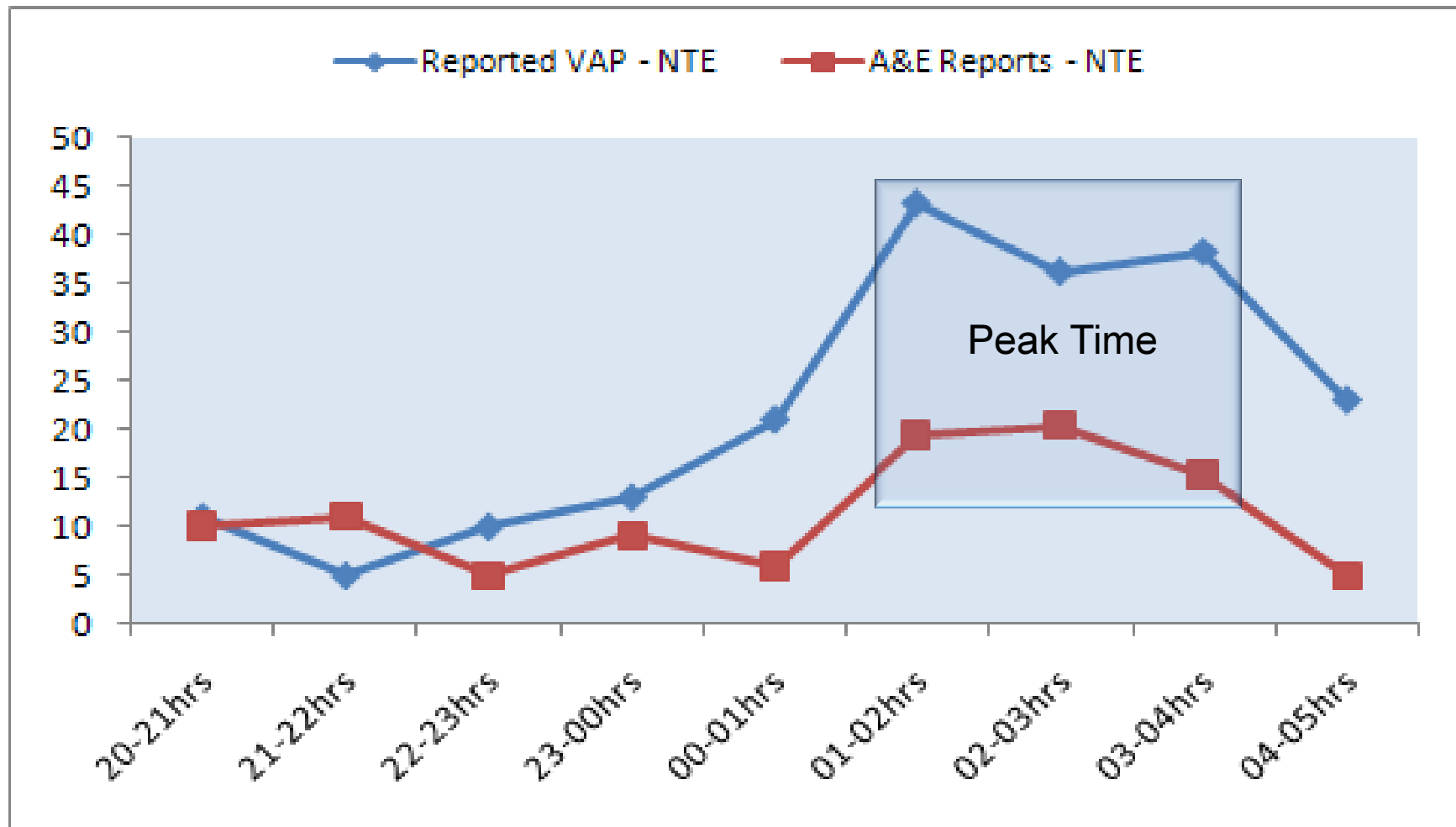


Ambulance Call Outs & Accident & Emergency

Last 12 Months A&E Records - Police Report?



Police Vs A&E Data



Maciej Wojewodka Operational Policing
(North) Performance Analyst

Summary

- The Night Time Economy runs for 24 hours per week, but is responsible for 31% of All Violent A&E Admissions.
- Almost 40% of all NTE incidents recorded by A&E are **NOT** being reported to the Police.
- The Night Time Economy runs from 8pm-6am every Thursday, Friday and Saturday. However, the 3 hour period of 1am-4am is responsible for 52% of all Night Time Economy A&E records, and 59% of all NTE Reported Violent Crime.