

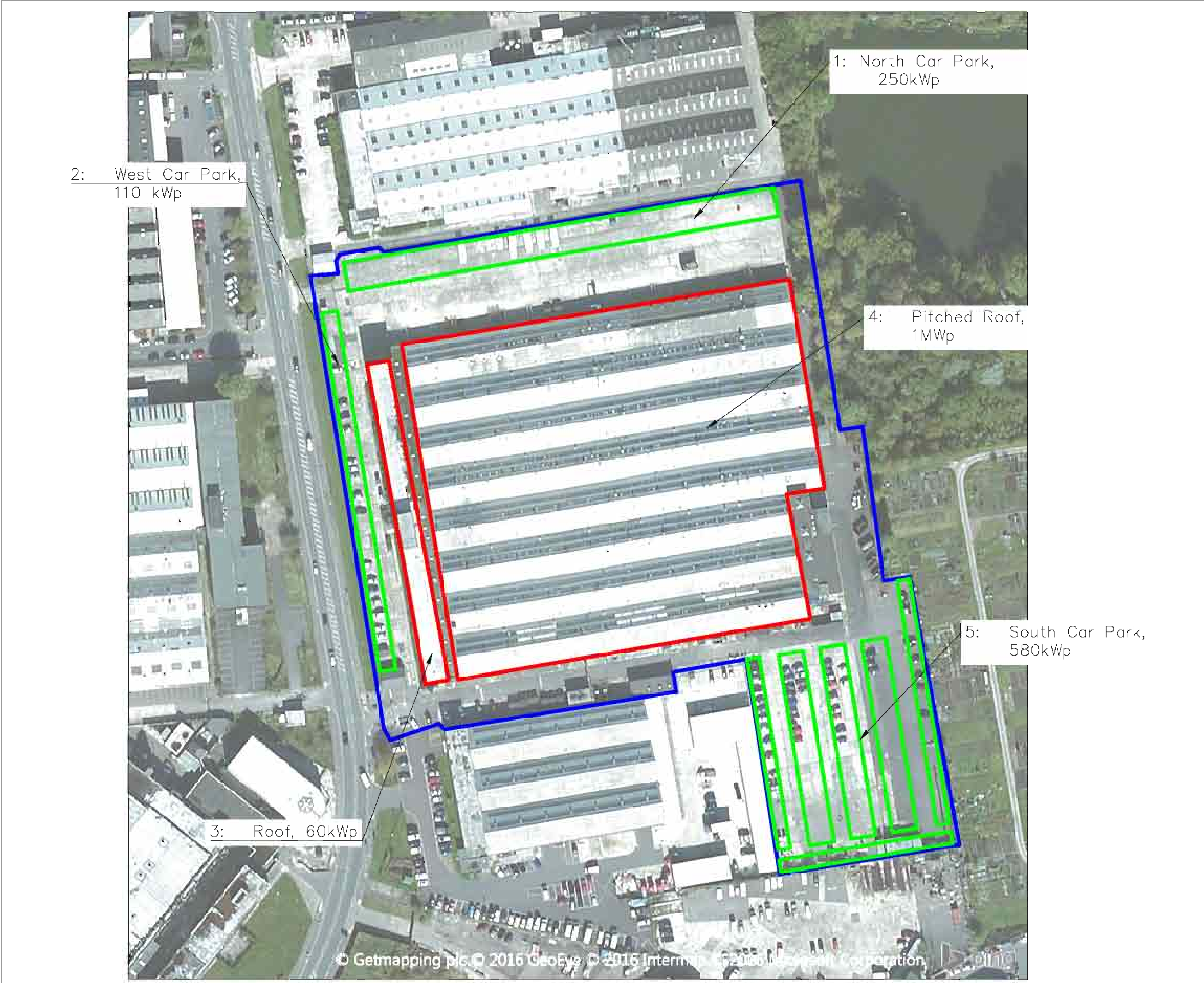
SITE LOCATION



Scale 1:8000 @ A1

Coordinates	
OS X (Eastings)	413516
OS Y (Northings)	186184
Nearest Post Code	SN2 2PZ
Lat (WGS84)	N51: 34: 28 (51.574363)
Long (WGS84)	W1: 48: 23 (-1.806364)

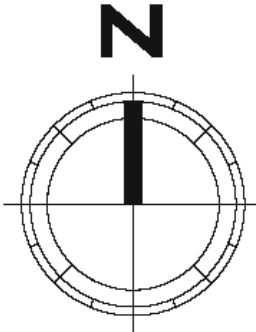
GENERATION CAPACITY
2MWp Total Capacity Car Park and Roof



Scale 1:1000 @ A1

This Drawing Is Copyright And Not Be Reproduced Or Used For Any Purpose Other Than That Intended Without The Prior Written Agreement Of Public Power Solutions Ltd

General Notes



LAND IN SAME OWNERSHIP —

- ROOF:**
- 3: Office Building, 60kWp
 - 4: Pitched Roof, 1MWp
- CAR PARK:**
- 1: North Car Park, 250kWp
 - 2: West Car Park, 110kWp
 - 5: South Car Park, 580kWp



Public Power Solutions Ltd
Waterside Park, Cheney Manor
Industrial Estate, Darby Close
Swindon, SN2 2PN
www.publicpowersolutions.co.uk

Project	
2 MW	DYNAMATICS Ltd.
3.6 Ha	Cheney Manor Industrial Estate, Swindon, SN2 2PZ
Date	29/03/2016
Scale	As Shown @ A1
Rev.	10.16.GE.FEA.Rev.1