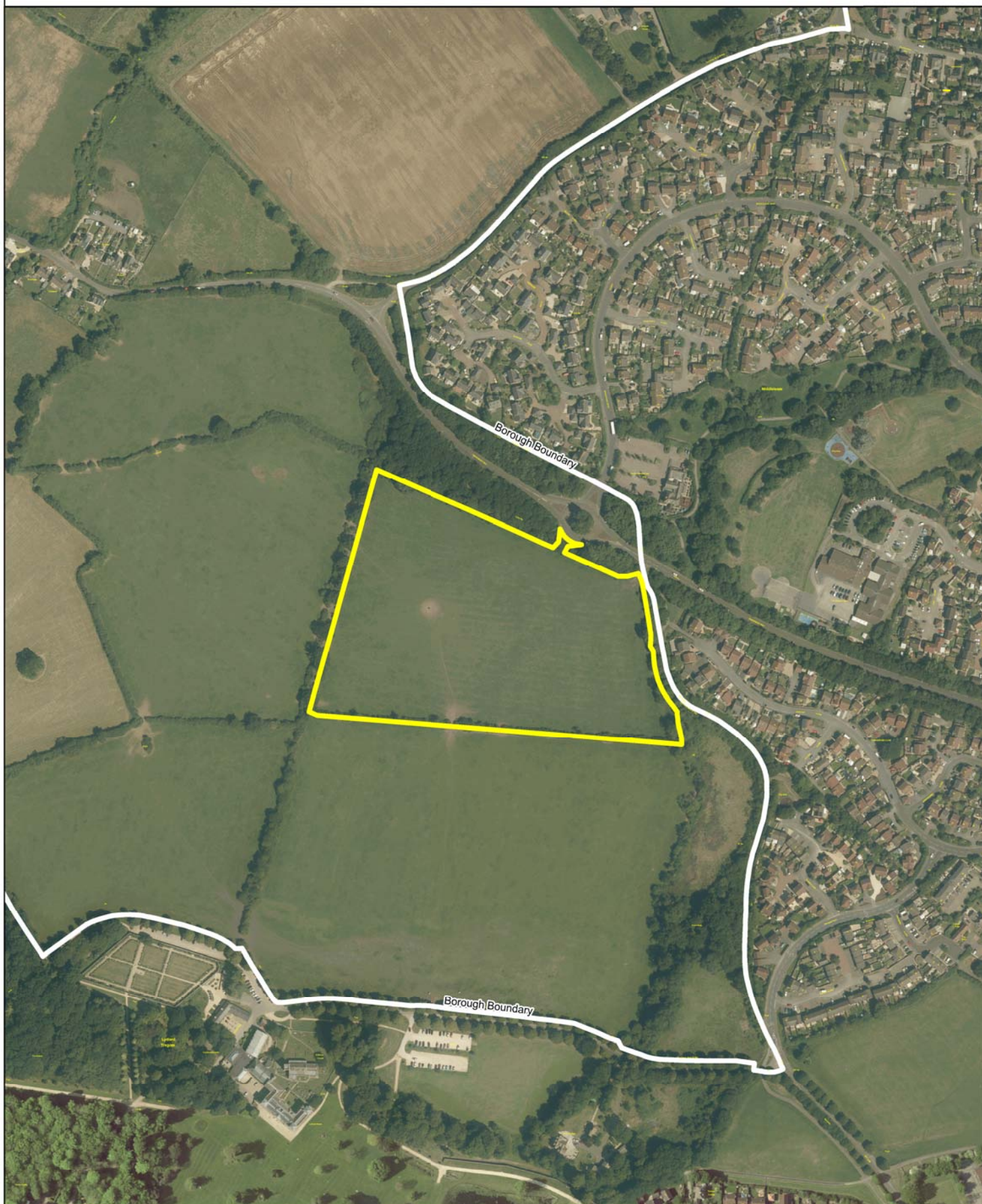


S/16/06978/FUL

Proposed residential development of 48 dwellings, with public open space, associated access, infrastructure and landscaping.

Land south of Tewkesbury Way Swindon Wiltshire



This Plan is for illustrative purposes only and is not intended to provide accurate representation of the development.
In all cases references should be made to the submitted plans.

© Crown copyright and Database Rights 100024296 2015