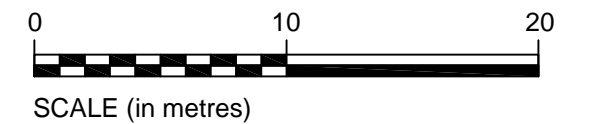
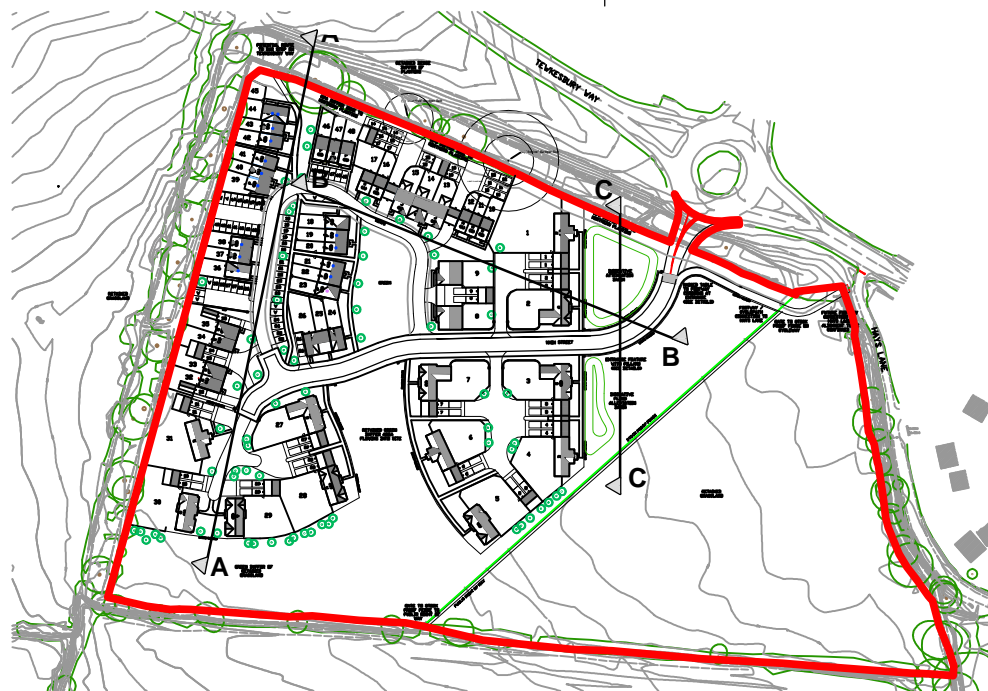




SECTION A - A



SECTION A - A



ALP Architects
15 Gosditch St Cirencester GL7 2AG 01285 641146

Taylor Wimpey

Taylor Wimpey Oxfordshire, Windrush Court, Suite J,
Abingdon Business Park, Abingdon, Oxfordshire, OX14 1SY
t: 01235 541900 f: 01235 541901

TAYLOR WIMPEY OXFORD

Project Title
**LAND AT LYDIARD TREGOZE
NEW HOUSING**

Drawing Title
SITE SECTION A - A

Scales: 1:300@A3
Date: 30.11.2015
Drawn by: KS / AJ

Drawing Number
723/PL/40
Revision